

# General Laboratory Supplies

Sample preparation and storage impose a wide variety of requirements on laboratory instruments. Depending on the requirements, we offer materials ranging from glass to specialty plastics, like PFA for trace analysis.

Distributed by



Australian Head Office

PO BOX 465  
Blackburn, VIC 3130


Free Call: 1800 723 405


Ph: (03) 9845 0300

Fax: + 61 3 9845 0350

e-mail: [sales@pacificlab.com.au](mailto:sales@pacificlab.com.au)

Connect with us:

 /PacificLab

 @PacificLabP



[www.pacificlab.com.au](http://www.pacificlab.com.au) / [www.pacificlab.co.nz](http://www.pacificlab.co.nz)

# PARAFILM® M Sealing film

for manual applications



## Physical properties

Toxicity: non-toxic  
 Melting point: 60 °C  
 Flash point: 301 °C  
 Temperature range (continuous use):  
 -45 °C to +50 °C  
 Stretching ability: 200%  
 Elongation at tear: 300%

Gas permeability in 24 hours at 23 °C with 50% relative humidity:  
 O<sub>2</sub> (oxygen): ≤ 350 cm<sup>3</sup>/m<sup>2</sup>  
 N<sub>2</sub> (nitrogen): ≤ 105 cm<sup>3</sup>/m<sup>2</sup>  
 CO<sub>2</sub> (carbon dioxide):  
 ≤ 1100 cm<sup>3</sup>/m<sup>2</sup>

Water vapor permeability in 24 hours at 37 °C and 90% relative humidity:  
 0.8 g/m<sup>2</sup>

## Practical features

Elastic PARAFILM® M sealing film always fits, whether for beakers or Erlenmeyer flasks, weighing bottles or graduated cylinders. It protects your samples from contamination or evaporation, and prevents leakage from overturned containers. PARAFILM® M can be stretched by up to 200%, and be sealed to irregular shapes and surfaces.

## Material

PARAFILM® M is free of plasticizers, and consists largely of polyolefins and paraffin waxes. If PARAFILM® M should come into contact with food, the guidelines of the locally valid food handling laws should be followed. PARAFILM® M complies with the general requirements of the FDA (Food and Drug Administration) for use under 55 °C, as well as satisfying GMP (Good Manufacturing Practice).

## Chemical resistance

PARAFILM® M is resistant up to 48 hours against many polar substances, e.g., saline solutions, inorganic acids and alkaline solutions. After this period embrittlement may occur.

## Effects of 48 hours of exposure at 23 °C

Acids:	
Hydrochloric acid 36.5%	resistant
Sulfuric acid 98%	resistant
Nitric acid 95%	resistant*
Alkaline solutions:	
Sodium hydroxide 22%	resistant
Ammonia 28%	resistant
Saline solutions:	
Sodium chloride 20%	resistant
Potass. permanganate 5%	resistant*
Iodine solution 0.1 mol/l	resistant*
Organic solvents:	
Methanol	resistant
Ethanol	resistant
Isopropanol	resistant
Diethylether	not resistant
Chloroform	not resistant
Carbon tetrachloride	not resistant
Benzene	not resistant
Toluene	not resistant

\* Brown discoloration

## Storability

PARAFILM® M can be stored for at least 3 years without loss of quality under storage condition between 7 °C and 32 °C and a relative humidity of 50%.



## PARAFILM® M Sealing film

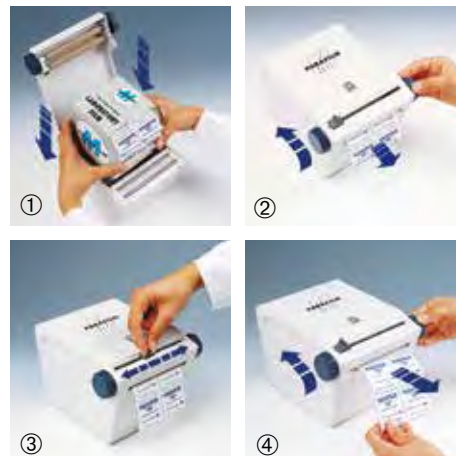
Width mm	Length m	Pack of	Cat. No.
50	75	24	7016 11
100	38	12	7016 05
100	75	12	7016 06
500	15	6	7015 01



## PARAFILM® M Cutter

The handy PARAFILM® M Cutter is convenient for clean storage and cutting of PARAFILM® M sealing film. Suitable for 50 mm and 100 mm wide rolls. Pack of 1.

Cat. No. 7016 50



## Erlenmeyer flasks

### Narrow neck

Boro 3.3. DIN ISO 1773. With beaded rim and graduation.  
Pack of 10 (3000 ml: Pack of 2; 5000 ml: Pack of 1).

Capacity ml	Neck outer-Ø mm	Flask outer-Ø mm max.	Height mm	Cat. No.
25	22	42	75	927 14
50	22	51	90	927 17
100	22	64	105	927 24
200*	34	79	131	927 32
250	34	85	145	927 36
300*	34	87	156	927 39
500	34	105	180	927 44
1000	42	131	220	927 54
2000	50	166	280	927 63
3000	52	187	310	927 68
5000	52	220	365	927 73

\* in addition to the ISO range

### Wide neck

Boro 3.3. DIN EN ISO 24450. With beaded rim and graduation. Pack of 10.

Capacity ml	Neck outer-Ø mm	Flask outer-Ø mm max.	Height mm	Cat. No.
25*	31	43	70	928 14
50	34	51	85	928 17
100	34	64	105	928 24
200*	50	79	131	928 32
250	50	85	140	928 36
300*	50	87	156	928 39
500	50	105	175	928 44
1000	50	131	220	928 54
2000*	72	153	276	928 63

\* in addition to the ISO range

## Beakers

### Low form

Boro 3.3. DIN 12331/ISO 3819.

With graduation and spout.

Pack of 10

(3000 ml: Pack of 4; 5000 ml: Pack of 1).

Capacity ml	Ø x Height mm	Cat. No.
5*	22 x 30	912 10
10*	26 x 35	912 12
25	34 x 50	912 14
50	42 x 60	912 17
100	50 x 70	912 24
150	60 x 80	912 29
250	70 x 95	912 36
400	80 x 110	912 41
600	90 x 125	912 48
800	100 x 135	912 53
1000	105 x 145	912 54
2000	132 x 185	912 63
3000	152 x 210	912 68
5000	170 x 270	912 73

\* without graduation

### Tall form


Boro 3.3. DIN 12331/ISO 3819.

With graduation and spout.

Pack of 10

(3000 ml: Pack of 2).

Capacity ml	Ø x Height mm	Cat. No.
50	38 x 70	906 17
100	48 x 80	906 24
150	54 x 95	906 29
250	60 x 120	906 36
400	70 x 130	906 41
600	80 x 150	906 48
800	90 x 175	906 53
1000	95 x 180	906 54
2000	120 x 240	906 63
3000	135 x 280	906 68

**Note!**  The abbreviation Boro 3.3 represents the internationally designated borosilicate glass type 3.3.





## Beakers, low form

with blue printed scale or embossed

ISO 7056. With graduation, beaded rim and spout. Cleaning at temperatures below 60 °C is recommended to preserve marks and inscriptions. For autoclaving (121 °C), beakers with an embossed scale should be selected.

**NEW!**

PP, high clarity

Capacity ml	Subdivision ml	Height mm	max. Ø mm	Pack of	Blue scale Cat. No.	Embossed scale Cat. No.
10*	2	36	30	12	<b>876 02</b>	–
25	5	50	38	12	<b>876 04</b>	<b>878 04</b>
50	10	60	47	12	<b>876 06</b>	<b>878 06</b>
100	10	70	55	12	<b>876 08</b>	<b>878 08</b>
150*	20	80	66	12	<b>876 10</b>	<b>878 10</b>
250	25	95	77	6	<b>876 12</b>	<b>878 12</b>
400*	50	112	87	6	<b>876 14</b>	<b>878 14</b>
500	50	118	94	6	<b>876 16</b>	<b>878 16</b>
600*	50	127	100	6	<b>876 18</b>	<b>878 18</b>
1000	100	147	120	6	<b>876 20</b>	<b>878 20</b>
2000	200	187	149	6	<b>876 22</b>	<b>878 22</b>
3000*	250	212	170	4	<b>876 24</b>	<b>878 24</b>
5000	500	247	203	4	<b>876 26</b>	<b>878 26</b>

\* in addition to ISO 7056

**NEW!**

PMP, transparent

Capacity ml	Subdivision ml	Height mm	max. Ø mm	Pack of	Blue scale Cat. No.	Embossed scale Cat. No.
10*	2	36	30	12	<b>875 02</b>	–
25	5	50	38	12	<b>875 04</b>	<b>877 04</b>
50	10	60	47	12	<b>875 06</b>	<b>877 06</b>
100	10	70	55	12	<b>875 08</b>	<b>877 08</b>
150*	20	80	66	12	<b>875 10</b>	<b>877 10</b>
250	25	95	77	6	<b>875 12</b>	<b>877 12</b>
400*	50	112	87	6	<b>875 14</b>	<b>877 14</b>
500	50	118	94	6	<b>875 16</b>	<b>877 16</b>
600*	50	127	100	6	<b>875 18</b>	<b>877 18</b>
1000	100	147	120	6	<b>875 20</b>	<b>877 20</b>
2000	200	187	149	6	<b>875 22</b>	<b>877 22</b>
3000*	250	212	170	4	<b>875 24</b>	<b>877 24</b>
5000	500	247	203	4	<b>875 26</b>	<b>877 26</b>

\* in addition to ISO 7056

## Graduated beakers with handle

with blue printed scale or embossed

PP, high clarity. Ergonomic handle for secure grip. Functional spout to minimize spills. Cleaning at temperatures below 60 °C is recommended to preserve marks and inscriptions. For autoclaving (121 °C), beakers with an embossed scale should be selected.

**NEW!**

PP, high clarity

Capacity ml	Subdivision ml	Height mm	max. Ø mm	Pack of	Blue scale Cat. No.	Embossed scale Cat. No.
50	2	70	40	24	408 02	410 02
100	2	80	50	24	408 04	410 04
250	5	120	74	12	408 06	410 06
500	10	140	92	12	408 08	410 08
1000	20	181	117	6	408 10	410 10
2000	50	213	152	6	408 12	410 12
3000	50	242	172	6	408 14	410 14
5000	100	270	204	6	408 16	410 16



## Beakers, low form

ETFE, translucent. Excellent chemical resistance. With graduation, beaded rim and spout. Pack of 1.

Capacity ml	Subdivision ml	Height mm	Ø mm	Cat. No.
25	5	50	32	902 24
50	10	59	39	902 28
100	20	72	50	902 38
250	50	96	67	902 48
400	50	109	77	902 52
500	100	122	88	902 54
600	100	125	91	902 56
1000	100	143	105	902 62



## Beakers, low form

PFA. ISO 7056. Easy to read embossed scale, wear-resistant when used frequently. Space-saving stackable design. Autoclavable, easy to clean, withstands temperatures from -200 °C to 260 °C. Pack of 1.

Capacity ml	Subdivision ml	Height mm	Ø mm	Cat. No.
25	5	50	32	901 20
50	10	59	39	901 28
100	20	72	50	901 38
250	50	96	67	901 48
500	100	122	88	901 54
1000	100	141	109	901 62





## Beakers, low form

PTFE. Excellent thermal and chemical resistance. With reinforced rim and spout. Without graduation. Pack of 1.

Capacity ml	Ø mm	Height mm	Cat. No.
5	20	26	903 05
10	24	33	903 08
25	32	47	903 20
50	43	55	903 28
100	54	68	903 38
150	59	75	903 44
250	66	97	903 48
400	80	125	903 52
500	100	125	903 54
1000	105	155	903 62
2000	125	205	903 64



## Sampling dippers

PTFE. With reinforced rim and spout. PTFE handle with steel core. Optional extension rod for increased handle length. Pack of 1. (Extension rod, length 600 mm. Pack of 1. Cat. No. 904 70)

Capacity ml	Ø mm	Height mm	Cat. No.
100	55	65	904 38
250	70	95	904 48
500	80	125	904 54
1000	105	155	904 62



## Erlenmeyer flasks, wide neck

with screw cap

PP, high clarity. With graduation. Neck with standard ground socket. Pack of 6 (1000 ml: Pack of 4).

(Conical joint stopper, PE-LD: STJ 34/35 Cat. No. 1444 40, STJ 45/40 Cat. No. 1444 45. Pack of 1.)

Capacity ml	Thread	Flask outer-Ø mm max.	Height mm	Neck size	Cat. No.
50	GL 40	52	90	34/35	931 70
100	GL 40	64	110	34/35	931 72
250	GL 52	85	140	45/40	931 75
500	GL 52	108	180	45/40	931 80
1000	GL 52	135	220	45/40	931 85

## Watch glasses

Soda-lime glass. DIN 12341.  
Fire-polished edges. Stress-reduced  
to minimize risk of shattering.  
Pack of 10 (size 250 mm: Pack of 1).

Ø mm	Cat. No.
40	1500 10
50	1500 15
60	1500 20
70	1500 30
80	1500 40
90	1500 45
100	1500 50
120	1500 60
125	1500 65
150	1500 70
200	1500 80



## Watch glasses

PTFE. Ideal for covering PTFE beakers.  
Excellent chemical resistance.  
Pack of 1.

Ø mm	for PTFE beakers size ml	Cat. No.
20	1	1509 00
30	5 - 10	1509 02
40	25	1509 04
50	50	1509 05
65	100	1509 07
75	150	1509 10
80	250	1509 12
100	400 - 500	1509 15
125	600 - 1000	1509 20
150	2000	1509 22



## Evaporating dishes

PP. Shallow form without spout.  
Pack of 1.

Capacity ml	Height mm	max. Ø mm	Cat. No.
50	25	70	455 05
170	35	105	455 10



## Evaporating dishes

PFA, snap-on lid PE. Evaporating  
dishes are autoclavable, easy to clean  
and withstand temperatures from  
-200 °C to +260 °C (The snap-on lid  
is not autoclavable). Pack of 1.

Capacity ml	Cat. No.
25	458 00
50	458 02





Capacity ml	max. Ø mm	Height mm	Cat. No.
5	25	20	<b>455 40</b>
25	45	30	<b>455 45</b>
75	60	40	<b>455 50</b>

## Evaporating dishes

PTFE. Crucible form without spout. Excellent chemical resistance. Pack of 1.



Capacity ml	max. Ø mm	Height mm	Cat. No.
25	40	35	<b>456 15</b>
50	50	40	<b>456 17</b>
100	65	55	<b>456 20</b>
150	80	40	<b>456 21</b>
180	80	50	<b>456 22</b>
250	95	45	<b>456 23</b>
350	100	60	<b>456 25</b>

## Evaporating dishes

PTFE. Conical with spout. Pack of 1.



Capacity ml	max. Ø mm	Height mm	Cat. No.
25	40	25	<b>457 03</b>
50	65	25	<b>457 05</b>
100	80	30	<b>457 10</b>
180	80	45	<b>457 18</b>
350	100	55	<b>457 22</b>

## Crystallizing dishes

PTFE. Cylindrical without spout. Pack of 1.



max. Ø mm	Height mm	Cat. No.
125	80	<b>1107 05</b>
150	90	<b>1107 10</b>

## Mortars with pestle

Melamine formaldehyde (MF), white. Resistant to boiling and autoclavable (121 °C). With foot and spout. Pack of 1.



## Centrifuge tubes, ungraduated

AR-GLAS® or Boro 3.3. Wall thickness approx. 1.0 mm. Withstands RCF up to 3500.

Description	Glass	Capacity ml	Outer-Ø mm	Height mm	Pack of	Cat. No.
Conical bottom, beaded rim	AR-GLAS®	15	17	113	100	<b>7780 12</b>
Conical bottom, beaded rim	Boro 3.3	15	17	113	100	<b>7780 13</b>
Cone-pointed bottom, rimless	AR-GLAS®	11	16,5	98	100	<b>7790 12</b>
Round bottom, rimless	AR-GLAS®	13	16,5	98	200	<b>7790 22</b>



## Centrifuge tubes, graduated

### conical bottom

AR-GLAS® or Boro 3.3. Capacity 15 ml. Graduations and inscriptions in high contrast white enamel. Pack of 10.

Graduation from - to ml approx.	Glass	Subdivision ml	Ø mm	Height mm	Wall thickness mm	RCF max.	Cat. No.
0 - 10	AR-GLAS®	0.1	17	113	ca. 1.0	3500	<b>7783 12</b>
0 - 10	Boro 3.3	0.1	17	113	ca. 1.0	3500	<b>7783 13</b>
0 - 15	AR-GLAS®	0.1	17	113	ca. 1.0	3500	<b>7787 12</b>
0 - 15	Boro 3.3	0.1	17	113	ca. 1.0	3500	<b>7787 13</b>



## Test tubes, graduated

### with spout and without stopper, or with standard ground joint neck and PP stopper

Boro 3.3. Graduation and inscriptions in high contrast white enamel. Wall thickness approx. 1.2 mm. Pack of 10.

Description	Capacity ml approx.	Subdivision ml	Neck size	Ø mm	Height mm	Cat. No.
With spout, without stopper	10	0.1	–	15	150	<b>1143 08</b>
With spout, without stopper	20	0.2	–	17	180	<b>1143 16</b>
With spout, without stopper	25	0.2	–	17	200	<b>1143 21</b>
With spout, without stopper	30	0.5	–	19	200	<b>1143 24</b>
Standard ground joint neck with PP stopper	10	0.1	12/21	15	165	<b>1145 08</b>
Standard ground joint neck with PP stopper	20	0.2	14/23	17	200	<b>1145 16</b>
Standard ground joint neck with PP stopper	25	0.2	14/23	17	220	<b>1145 21</b>
Standard ground joint neck with PP stopper	30	0.5	14/23	19	220	<b>1145 24</b>



## Sample tubes

### with screw cap

PFA-screw cap with integrated seal lip. Individually calibrated ring mark at 10 ml. Autoclavable, easy to clean, withstands temperatures from -200 °C to +260 °C. Pack of 1. (Replacement screw-cap, PFA. Pack of 1. Cat. No. 1292 52)

Capacity ml	Ø mm	Height mm	Thread GL	Cat. No.
15	22	110	25	<b>7794 20</b>





## Funnels

### plain interior

Boro 3.3. Angled at 60°, ground and fire-polished upper rim. Short stem. Pack of 1.

Funnel outer-Ø mm	Stem outer-Ø mm	Stem length mm	Cat. No.
35	6	35	1455 05
40	6	40	1455 07
50	7	50	1455 15
55	8	55	1455 20
60	8	60	1455 25
70	8	70	1455 30
80	9	80	1455 35
100	10	100	1455 40
120	16	120	1455 45
150	16	150	1455 50
200	26	175	1455 60



## Funnels

### fluted interior

Boro 3.3. For rapid filtration. Angled at 60°, ground and fire-polished upper rim. Short stem. Pack of 10 (Cat. No. 1456 38: Pack of 1).

Funnel outer-Ø mm	Stem outer-Ø mm	Stem length mm	Cat. No.
70	8	70	1456 11
80	10	80	1456 16
100	10	100	1456 19
150	16	150	1456 31
200	26	175	1456 38

## Funnels

### plain interior

PP.



Funnel outer-Ø mm	Stem outer-Ø mm	Stem length mm	Pack of	Cat. No.
30	2	25	24	1470 00
30	5	25	24	1470 05
40	5	35	24	1470 10
50	9	43	24	1470 15
75	10	55	12	1470 20
100	13	77	12	1470 25
120	14	90	12	1470 30
150	17	95	12	1470 35

## Funnels

### fluted interior

PP. For rapid filtration. Angled at 60°. External flutings allow air to escape during filtration.

Funnel outer-Ø mm	Stem outer-Ø mm	Stem length mm	Pack of	Cat. No.
25	4	39	20	1482 05
35	5	38	20	1482 10
45	5	44	20	1482 15
65	9	63	20	1482 20
80	10	69	20	1482 25
100	11	82	1	1482 35
120	11	85	1	1482 37
150	14	115	1	1482 40
180	14	143	1	1482 45



## Powder funnels

Boro 3.3. Ground and fire-polished upper rim. With short, wide stem. Pack of 1.

Upper Ø mm	Lower Ø mm	Cat. No.
50	18	1465 06
60	18	1465 08
70	20	1465 11
80	22	1465 16
90	25	1465 17
100	25	1465 19
120	30	1465 23



## Powder funnels

PP. With short, wide stem.

Funnel outer-Ø mm	Stem outer-Ø mm	Stem length mm	Pack of	Cat. No.
60	15	19	20	1480 20
80	15	23	20	1480 25
100	25	23	20	1480 30
120	30	28	1	1480 35
150	35	42	1	1480 40
180	40	48	1	1480 45



## Carboy funnels

PP. Pack of 1.

Funnel outer-Ø mm	Stem outer-Ø mm	Stem length mm	Cat. No.
210	25	90	1470 40
260	30	100	1470 45
350	32	170	1470 50
400	40	150	1470 55
440 (PE-HD)	35	140	1470 60





## Standard ground joint funnels

PP. Half-round body. Stem fits standard ground sockets. Ideal for filling liquids or powders into multi-neck flasks. Pack of 10 (Cat. No. 949 15: Pack of 5).

Distance to flat side mm	Stem fits socket size	Cat. No.
40	14/23	949 05
50	19/26	949 10
80	29/32	949 15

## Buchner funnels

PP. Two detachable pieces facilitate cleaning. Use with suggested filter paper. Pack of 1.



Nominal size mm	Filter disk Ø mm	for filter paper Ø mm	Cat. No.
45	45	45	1485 05
55	55	55	1485 10
70	72	70	1485 15
80	82	70	1485 20
90	93	90	1485 25
110	120	110	1485 30
160	160	150	1485 35
240	240	240	1485 40

## Filter disks for Buchner funnels

PE-HD 1 mm mesh. Insert between the perforated support plate of the Buchner funnel, and the filter paper. Prevents filter paper sticking. Pack of 10.



Ø mm	Cat. No.
45	1486 05
55	1486 10
70	1486 15
80	1486 20
90	1486 25
110	1486 30
160	1486 35
240	1486 40

## Separating funnels

PP, high clarity for observation of contents. With PP screw cap and special conical PTFE stopcock with retention device. Autoclavable (121 °C). Pack of 1.

Capacity ml	Cat. No.
125	1400 04
250	1400 05
500	1400 06
1000	1400 07



## Holder for separating funnels

PP. For conical separating funnels up to 1000 ml. Easily mounted on support rods with an outer-Ø 8-14 mm with a locking nut. Pack of 1.



Cat. No.	1403 00
----------	---------

## Funnel holders

PP. To support 1 or 2 funnels with top outer-Ø of 50 to 120 mm. Easily mounted on support rods with an outer-Ø 8-14 mm with a locking nut. Pack of 5.

Description	Cat. No.
for 1 funnel	1485 00
for 2 funnels	1485 02



## Filter funnel supports

PP plates with aluminum support rod. Ø x length in mm: 12.7 x 595. To support 2 or 4 funnels with top outer Ø of 50 to 120 mm. Adjustable funnel height. Pack of 1.

Description	Length base plate mm	Width base plate mm	Cat. No.
for 2 funnels	250	140	745 06
for 4 funnels	450	140	745 11





## Filter funnels

Boro 3.3. Pack of 1.

Identification Code	Porosity	Capacity ml	Ø Filter disk mm	Stem outer-Ø mm	Cat. No.
3 D	3	50	35	10	4640 03
3 D	4	50	35	10	4640 04
11 D	3	75	45	10	4647 13
11 D	4	75	45	10	4647 14
17 D	3	125	60	10	4654 23
17 D	4	125	60	10	4654 24
25 D	3	500	95	22	4661 33
25 D	4	500	95	22	4661 34



## Filter crucibles

Boro 3.3. Pack of 10.

Identification Code	Porosity	Capacity ml	Ø Filter disk mm	Cat. No.
1 D	1	30	30	4580 21
1 D	2	30	30	4580 22
1 D	3	30	30	4580 23
1 D	4	30	30	4580 24
2 D	1	50	40	4587 31
2 D	2	50	40	4587 32
2 D	3	50	40	4587 33
2 D	4	50	40	4587 34



## Filter adapters

Boro 3.3. Suitable for filter crucibles, according to identification code above.  
Pack of 10.

Identification Code	Upper Ø mm	Overall length mm	Cat. No.
1 D	41	125	4636 16
2 D	50	132	4637 32

Porosity	Identification ISO 4793	Nominal max. pore size, µm
1	P 160	100 - 160
2	P 100	40 - 100
3	P 40	16 - 40
4	P 16	10 - 16

## Rubber sleeves

Rubber (EPDM). Suitable for filter crucibles, according to identification code.  
Pack of 10.

Identification Code	Outer Ø mm	Cat. No.
1 D	41	4620 26
2 D	49	4622 31



## Rubber gaskets

Rubber (EPDM). Conical gaskets to place between filter funnel and filter flask.  
Pack of 10.

Upper outer-Ø mm	Lower outer-Ø mm	Lower inner-Ø mm	Cat. No.
22	11	6	4625 12
28	16	9	4626 17
35	20	14	4627 23
42	25	18	4628 27
50	32	22	4629 32
63	43	33	4630 36
71	52	42	4631 39
84	61	50	4632 43
<b>Rubber gasket set.</b> Pack of 1.			<b>4625 00</b>



## Filter flasks with socket

### (Buchner filter flasks)

Boro 3.3. DIN 12 476, ISO 6556. Lateral socket for pushing in vacuum tubing with outer diameter 15-18 mm. Pack of 1.

Capacity ml	max. outer-Ø mm	Height mm	Neck inner-Ø mm	Cat. No.
250	85	155	33.7	737 14
500	105	185	33.7	737 19
1000	135	230	45	737 24
2000	166	265	60	737 29





## Desiccators

### with knob lid

Boro 3.3. DIN 12491. Precisely ground flat flanges. Base ring surface studded to improve stability and help prevent cracks. Interchangeable lid. Pack of 1.

Nominal size mm	Ø mm	Height mm	Cat. No.
150	215	252	<b>650 31</b>
200	270	309	<b>650 38</b>
250	320	357	<b>650 43</b>



## Desiccators

### with socket in the lid

Boro 3.3. DIN 12491. Precisely ground flat flanges. Base ring surface studded to improve stability and help prevent cracks. Interchangeable lid. Socket, ground joint neck size 24/29, with interchangeable stopcock. Pack of 1.

Nominal size mm	Ø mm	Height mm	Cat. No.
150	215	316	<b>652 31</b>
200	270	368	<b>652 38</b>
250	320	417	<b>652 43</b>



## Spare parts for desiccators of Boro 3.3

### Needle-valve stopcock for desiccators

Boro 3.3. Cone size 24/29. Suitable for desiccators with lid socket. PTFE spindle, aperture 0-4 mm. Lateral venting hole helps to reduce turbulence. Nozzle with outer diameter 10 mm. Pack of 1.

Cat. No.	<b>824 15</b>
----------	---------------



### Lid with knob

Boro 3.3. Pack of 1.

Nominal size mm	Ø mm	Height mm	Cat. No.
150	215	93	<b>656 31</b>
200	270	102	<b>656 38</b>
250	320	113	<b>656 43</b>



### Lid with socket

Boro 3.3. Pack of 1.

Nominal size mm	Ø mm	Height mm	Cat. No.
150	215	84	<b>657 31</b>
200	270	92	<b>657 38</b>
250	320	118	<b>657 43</b>



## Desiccators

PC lid, PP base and desiccant tray. Venting stopper with non-return valve in lid. Seal between lid and base: polychlorobutadiene rubber (CR) O-ring, compressed by vacuum. Lightweight and easy to handle. Pack of 1.

Nominal size mm	Ø mm	Height mm	Cat. No.
150	170	195	658 05
200	235	240	658 10
250	285	300	658 15



## Spare parts for desiccators of PC/PP

### Sealing rings

CR. Pack of 1.

Nominal size mm	Cat. No.
150	658 20
200	658 22
250	658 24



### Venting stopper

PC. Pack of 1.

Cat. No.	658 04

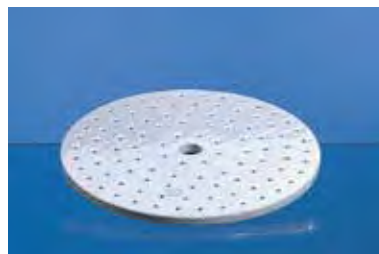


## Accessories for desiccators of Boro 3.3 or PC/PP

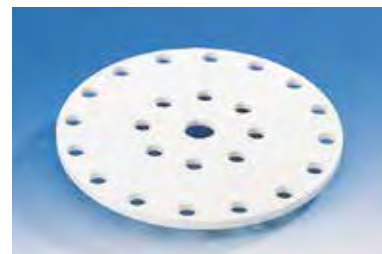
### Desiccator plates

Porcelain or PP. For glass and plastic desiccators. Central hole approx. 20 mm diameter, small perforations approx. 5 mm diameter. Pack of 1.

Nominal size mm	Ø mm	Porcelain Cat. No.	PP Cat. No.
150	140	659 65	660 15
200	190	659 75	660 25
250	235	659 80	660 30



Porcelain



PP



## Gas wash bottles, Drechsel pattern

**BISTABIL. With P1 filter disc.**

Boro 3.3 glass bottle and head. DIN 12596. With filter disc of porosity P1 (approx. 100-160 µm pore size). Drechsel pattern heads provide optimal stability. Overall height 275 mm, standard ground joint neck size 29/32, hose nozzles with outer diameter 11 mm. Pack of 1.

Capacity ml	Cat. No.
100	<b>782 38</b>
250	<b>782 48</b>
500	<b>782 54</b>
1000	<b>782 62</b>



## Gas wash bottles, Drechsel pattern

**BISTABIL. Without filter disc.**

Boro 3.3 glass bottle and head. DIN 12596. Without filter disc. Drechsel-pattern heads provide optimal stability. Overall height 275 mm, standard ground joint neck size 29/32, hose nozzles with outer diameter 11 mm. Pack of 1.

Capacity ml	Cat. No.
100	<b>781 38</b>
250	<b>781 48</b>
500	<b>781 54</b>
1000	<b>781 62</b>



## Wash bottles, without head

Boro 3.3. Standard ground joint neck size 29/32, to DIN 12463. Pack of 1.

Capacity ml	Neck size	Ø mm	Height mm	Description	Cat. No.
100	29/32	40	200	with base Ø 55 mm	<b>1269 38</b>
250	29/32	55	200	with base Ø 75 mm	<b>1269 48</b>
500	29/32	75	200	without base	<b>1269 54</b>
1000	29/32	107	200	without base	<b>1269 62</b>

## Wash bottle head with P1 filter disk

for gas wash bottles, Drechsel pattern

Boro 3.3. DIN 12596. Size 29/32. Length below top of cone 185 mm. Accommodates all bottle sizes to DIN 12463. Filter disk outer diameter 25 mm, porosity P1 (approx. 100-160 µm pore size). Pack of 1.

Cat. No. **782 00**



## Wash bottle head without filter disk

for gas wash bottles, Drechsel pattern

Boro 3.3. DIN 12596. Size 29/32. Length below top of cone 185 mm. Accommodates all bottle sizes to DIN 12463. Tube outer diameter 8 mm. Pack of 1.

Cat. No. **781 00**



## Gas wash bottles

PFA. Head with S40 thread. Frit, PTFE, with approx. 100 µm pore size for optimum gas pearling in the liquid. High-quality fluoroplastics make a wide range of applications possible. Pack of 1.

(For wash bottles, PFA, S40 thread see page 302).



Capacity ml	Ø mm	Height mm	Tubing connection Inner-Ø/outer-Ø mm	Heads Cat. No.	Gas wash bottle, complete Cat. No.
250	55	180	4/6	<b>783 00</b>	<b>783 48</b>
500	75	210	4/6	<b>783 01</b>	<b>783 54</b>
1000	107	249	5/8	<b>783 02</b>	<b>783 62</b>

## Gas sampling tubes

**BISTABIL**  
(Gas collecting tubes)

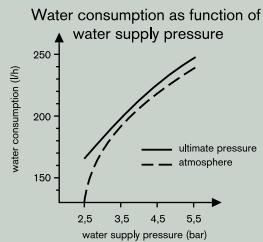
Boro 3.3. DIN 12473-1. With straight bore stopcocks size 3 NS/14 with retention device. One end with capillary tube (inner-diameter 2.7 mm, outer diameter 8 mm), other end with hose nozzle (outer diameter 9 mm). With marking area. Pack of 1.

Capacity ml	Cat. No.
100*	<b>2350 10</b>
250*	<b>2350 20</b>
500	<b>2350 30</b>

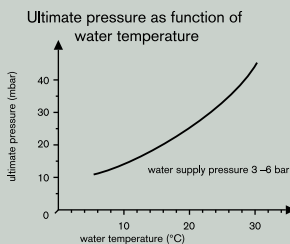
\* in addition to the DIN range



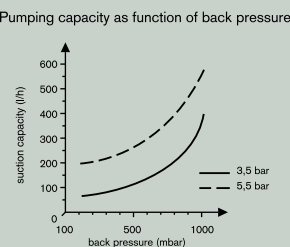
## Water jet pump

**Very low water consumption**

The flow configuration has been optimized, resulting in a 33 % reduction of water consumption (190 litres/h at 3.5 bar water supply pressure).

**Constant ultimate pressure**

The ultimate pressure of 16 mbar (water temperature: 12 °C) is reached across a wide range of water supply pressures (from 3 to 6 bar).

**High suction capacity**

Flow rate of approx. 400 litres/h of air (against atmospheric pressure, at a water supply pressure of 3.5 bar at 12 °C water temperature).

Pump fluid: water  
Overall length: approx. 210 mm  
(R 3/4" connector fitted)  
Weight: approx. 33 g  
(R 3/4" connector fitted)

- High chemical resistance, fluid path consists of PP, FKM and PTFE
- Operating temperature up to max. 80 °C
- Integrated non-return valve increases safety
- Simple operation and easy to clean
- Detachable vacuum connection
- Variety of supplied adapters simplify connections to most water sources. Optional reducing adapters are available.

**Ordering data**

Water jet pump includes:

sleeve nut R 3/4", reducing adapter R 1/2", and tubing connector (hose nozzle) of 10-12 mm outer diameter

Suction line connection:

Detachable hose nozzle of 6-9 mm outer diameter, with screw cap GL 14.  
Pack of 1.

Cat. No. 1596 00

**Accessories**

Reducing adapter R 3/8".  
Pack of 1.

Cat. No. 1596 65

Reducing adapter M 22 x 1  
(thread for screen tap). Pack of 1.

Cat. No. 1596 70

## Tubing

PVC. Particularly high-grade material, manufactured to a first-class standard. Good flexibility and chemical resistance make this tubing ideal for use with apparatus assemblies. Autoclavable (121 °C). Packing unit 20 meters.

inner-Ø mm	outer-Ø mm	Wall thickness mm	Cat. No.
2	4	1	1432 55
4	6	1	1432 60
5	8	1,5	1432 65
6	9	1,5	1432 70
7	11	2	1432 75
8	12	2	1432 80
10	14	2	1432 85
12	17	2,5	1432 90



## Tubing

Silicone (SI). Translucent. Autoclavable (121 °C). Note: limited chemical resistance when used with concentrated acids. Packing unit 25 meters.

inner-Ø mm	outer-Ø mm	Wall thickness mm	Cat. No.
2	4	1	1433 52
3	5	1	1433 55
4	6	1	1433 56
4	7	1,5	1433 57
5	8	1,5	1433 58
6	9	1,5	1433 59
6	10	2	1433 60
7	10	1,5	1433 61
8	12	2	1433 62
10	15	2,5	1433 64



## Flow indicator

Styrene-acrylonitrile (SAN), transparent. Optimizes cooling water flow during distillation. This helps to decrease operating costs by reducing water consumption. Operating pressure max. 2 bar, operating temperature for SAN max. 30 °C.

L x W x H in mm: 88 x 17 x 40.  
For tubing of inner-Ø 6-11 mm.  
Pack of 5.



Cat. No. 1340 80

## Spring clips

Spring steel, coated with zinc and polyethylene. Non-scratching, good chemical resistance. For wall mounting of cylindrical apparatus components, e.g., pipes, tubing, etc. Pack of 1.

Grip Ø mm	Bore mm	Cat. No.
6.5	2.5	760 05
9.5	2.5	760 10
13	3.0	760 15
16	3.0	760 20
19	3.5	760 25
25	3.5	760 35
29	4.0	760 40
32	4.0	760 45
42	4.0	760 50
51	4.0 *	760 55

\* 2 bores



## Tubing Connectors and Tubing Adapters

**straight**

PP, translucent. Connects tubing of different diameters. Pack of 10.

for tubing inner-Ø mm	Length mm	Cat. No.
5 - 17	110	1524 00

**straight**

PP, translucent. Pack of 10.

for tubing inner-Ø mm	Length mm	Cat. No.
3 - 5	47	1527 05
6 - 10	55	1527 10
9 - 13	57	1527 15

**straight**

PE-HD. Pack of 10.

for tubing inner-Ø mm	Length mm	Cat. No.
10 - 11	45	1527 55
12 - 14	74	1527 60
19 - 21	74	1527 65
24 - 26	84	1527 70

**straight**

PP, grey. Pack of 20 (Cat. No. 1522 70 and 1522 75: Pack of 10).

for tubing inner-Ø mm	Length mm	Cat. No.
4 - 5	39	1522 50
5 - 7	52	1522 55
7 - 9	59	1522 60
9 - 11	59	1522 65
11 - 13	66	1522 70
13 - 15	66	1522 75

**straight (tubing adapter)**

PE-HD. Pack of 10.

for tubing inner-Ø mm	Length mm	Cat. No.
8 - 10 / 11 - 14	66	1525 05
12 - 14 / 18 - 20.5	73	1525 10

## Tubing Connectors and Tubing Adapters

### straight (tubing adapter)

PP, translucent.  
Pack of 10.

for tubing inner-Ø mm	Length mm	Cat. No.
3 - 5 / 6 - 10	55	1526 05
3 - 5 / 9 - 13	55	1526 10
6 - 10 / 9 - 13	59	1526 15



### L-shape

PP, translucent.  
Pack of 20 (Cat. No. 1532 30 and 1532 35 pack of 10).

for tubing inner-Ø mm	Length mm	Cat. No.
3 - 4	15	1532 05
5	21	1532 10
6 - 7	25	1532 15
8 - 9	30	1532 20
10 - 11	36	1532 25
12 - 13	42	1532 30
14 - 15	48	1532 35



### T-shape

PP, translucent. Length 1 = Length of straight-through tube,  
Length 2 = Length of side arm including Ø of straight-through tube.  
Pack of 20 (Cat. No. 1528 20 and 1528 25: Pack of 10).

for tubing inner-Ø mm	Length 1 mm	Length 2 mm	Cat. No.
3 - 4	20	15	1528 00
4 - 5	30	23	1528 03
6 - 7	40	31	1528 05
8 - 9	55	39	1528 10
10 - 11	69	47	1528 15
12 - 13	79	53	1528 20
14 - 15	89	60	1528 25



### Y-shape

PP, transparent. Length1 = overall length, length 2 = distance between the two arms from one outer edge to the other.  
Pack of 20 (Cat. No. 1529 15 and 1529 20: Pack of 10).

for tubing inner-Ø mm	Length 1 mm	Length 2 mm	Cat. No.
3	24	14	1529 00
4 - 5	35	21	1529 03
6 - 7	54	34	1529 05
8 - 9	64	40	1529 07
10 - 11	74	47	1529 10
12 - 13	87	53	1529 15
14 - 15	98	60	1529 20



## Tubing Connectors



### X-shape

PP, translucent.  
Pack of 20 (Cat. No. 1531 30 and 1531 35: Pack of 10).

for tubing inner-Ø mm	Length mm	Cat. No.
2 - 3	26	1531 05
5	35	1531 10
6 - 7	42	1531 15
9	50	1531 20
10 - 11	62	1531 25
12 - 13	74	1531 30
14 - 15	84	1531 35



### Y-shape (120°)

PP, grey. Three arms at equal angles of 120°.  
Pack of 20 (Cat. No. 1530 25 and 1530 30: Pack of 10).

for tubing inner-Ø mm	Length mm	Cat. No.
4 - 5	26	1530 05
6 - 7	35	1530 10
8 - 9	42	1530 15
10 - 11	50	1530 20
12 - 13	62	1530 25
13 - 15	74	1530 30



### Plug-in coupling

PP. The two parts fit together with a cone-and-socket joint. Not suitable for pressure applications.  
Pack of 25.

for tubing inner-Ø mm	Length mm	Cat. No.
6 - 9	68	1523 00



### Non-return valve

PE-HD. For tubing of inner diameter 6-9 mm. Length 80 mm. FKM valve disk not suitable for pressure applications. Pack of 10.

Cat. No.	1340 02
----------	---------



## Straight-bore stopcocks

### with nozzles

PTFE, valve lever PP.  
Outstanding chemical resistance.  
Two integrated hose nozzles.  
Pack of 1.

for tubing inner-Ø mm	Bore mm	Cat. No.
3	2	886 10
4	2	886 15
5	3	886 20
6	3	886 25
7	4	886 30
8	4	886 35
9	5	886 40



## T-bore stopcocks

### with nozzles

PTFE, valve lever PP.  
Outstanding chemical resistance.  
Three integrated hose nozzles.  
Pack of 1.

for tubing inner-Ø mm	T-bore mm	Cat. No.
3	2	886 50
4	2	886 55
5	3	886 60
6	3	886 65
7	4	886 70
8	4	886 75
9	5	886 80



## Straight-bore stopcocks

### with nozzles

PE-HD. For operation under ambient pressure only. Two integrated hose nozzles.  
Pack of 1.

for tubing inner-Ø mm	Bore mm	Length mm	Cat. No.
12.5	9	97	885 05
9.5	7	80	885 10





## Conical joint clips

POM. Will not scratch glass surfaces. Excellent resilience and stability. Outstanding chemical resistance. Operating temperature up to 150 °C. Pack of 1.

For size	Color	Cat. No.
10/19	turquoise	556 38
12/21	violet	556 39
14/23	yellow	556 40
19/26	blue	556 42
24/29	green	556 44
29/32	red	556 46
34/35	orange	556 47
45/40	brown	556 49



## Conical joint clips

### Coated steel spring

PTFE. Will not scratch glass surfaces. Outstanding chemical resistance. Excellent resilience and good stability. Operating temperature up to 200 °C. Pack of 1.

For size	Cat. No.
10/19	555 60
12/21	555 62
14/23	555 64
19/26	555 69
24/29	555 74
29/32	555 79
34/35	555 84
45/40	555 95



## Stopcock grease, silicone-free

Ideal for lubricating burette stopcocks. Easy to remove, e.g., with Mucosal®. Good acid- and base-resistance. Operating temperature range -40 to +320 °C. Tube of 60 g. Pack of 1.

Cat. No. 616 10



## Silicone paste

Low viscosity. Operating temperature from -40 to +160 °C. For greasing ground joints. Tube of 50 g. Pack of 1.

Cat. No. 616 05



## Ground joint sleeves

PTFE. Greaseless seal will not contaminate sample. Outstanding chemical resistance at operating temperatures from -200 to +260 °C.

Thin walled sleeves (0.05 mm thick) fit snugly without adding bulk. Joints fit perfectly, without a protruding rim simplifying use of joint clips. Wide range of applications, including vacuum to 0.1 mbar, e.g., for rotary evaporators. Pack of 10.

For size	Cat. No.
7/16	514 16
10/19	514 17
12/21	514 18
14/23	514 19
19/26	514 20
24/29	514 21
29/32	514 22
34/35	514 23
45/40	514 24
50/42	514 25
55/44	514 26
60/46	514 27
40/38	514 30

## Sockets

### with grip collar

PTFE. Greaseless seal will not contaminate sample. Outstanding chemical resistance at operating temperatures from -200 to +260 °C. Sturdy design for permanent use. With grip collar and sealing rings for excellent tightness. Low leakage rate:

$$Q < 1 \cdot 10^{-4} \text{ mbar} \cdot \text{l} \cdot \text{s}^{-1}$$

Pack of 1.

Size	Cat. No.
10/19	514 63
14/23	514 64
19/26	514 65
24/29	514 66
29/32	514 67
34/35	514 68
45/40	514 69



## Rubber stoppers

Natural rubber (NR), red.

upper-Ø mm	lower-Ø mm	Height mm	Pack of	Cat. No.
9	5	20	25	1443 80
12	8	20	25	1443 82
14	11	20	25	1443 84
16	12	20	25	1443 85
18	14	20	25	1443 86
22	17	25	25	1443 88
24	18	30	25	1443 89
27	21	30	25	1443 90
32	26	30	25	1443 91
35	29	30	5	1443 93
38	31	35	5	1443 94
44	36	40	5	1443 95
49	41	40	5	1443 96
55	47	40	1	1443 97
60	50	45	1	1443 98
65	56	45	1	1443 99



## Silicone stoppers

SI, natural-colored.

upper-Ø mm	lower-Ø mm	Height mm	Pack of	Cat. No.
9	5	20	10	1443 05
12	8	20	10	1443 10
14	11	20	10	1443 15
16	12	20	10	1443 20
18	14	20	10	1443 25
22	17	25	10	1443 30
24	18	30	10	1443 35
27	21	30	10	1443 40
32	26	30	10	1443 45
35	29	30	10	1443 50
38	31	35	5	1443 55
44	36	40	5	1443 60
49	41	40	5	1443 65
55	47	40	5	1443 70
75	64	55	5	1443 75





### Conical ground joint stoppers

PP. Hollow, with sealing ribs and square grip. Autoclavable (121 °C). Pack of 10 (Cat. No. 1444 40, 1444 45 and 1444 46: Pack of 1).

Size	Cat. No.
7/16	1444 05
10/19	1444 10
12/21	1444 15
14/23	1444 20
19/26	1444 25
24/29	1444 30
29/32	1444 35
34/35*	1444 40
45/40*	1444 45
60/46*	1444 46

\* PE-LD, with octagonal grip



### Conical ground joint stoppers

PTFE. Solid, with sealing ribs and ergonomically designed grip. Resistant to temperatures up to 270 °C. Pack of 1.

Size	Cat. No.
10/19	1444 48
14/23	1444 50
19/26	1444 53
24/29	1444 55
29/32	1444 58
34/35	1444 59



### Conical ground joint stoppers

**BISTABIL**  
Boro 3.3. DIN 12 252. Hollow, with drip tip and hexagonal grip. Pack of 1.

Size	Cat. No.
7/16	1446 05
10/19	1446 10
12/21	1446 15
14/23	1446 20
19/26	1446 25
24/29	1446 30
29/32	1446 35
34/35	1446 40
45/40	1446 45



### Conical ground joint stoppers

Borosilicate glass. DIN 12 252. Solid or semi-hollow, with octagonal grip. Pack of 1.

Size	Description	Cat. No.
12/21	solid	1445 15
14/23	solid	1445 20
19/26	solid	1445 25
24/29	solid	1445 30
29/32	semi-hollow	1445 35
34/35	semi-hollow	1445 40
45/40	semi-hollow	1445 45

## Stirrers

Good operating characteristics due to steel-core shafts. Resistant to breakage. PP propeller greatly reduces scratching if stirrer inadvertently hits vessel wall. Pack of 1.

### Propeller, PP. Shaft PE-coated.

Stirrer shaft Ø mm	Stirrer shaft length mm	Rotor Ø mm	Cat. No
6	380	45	1356 00



### Propeller, PTFE

Stirrer shaft Ø mm	Stirrer shaft length mm	Rotor Ø mm	Cat. No
6	400	40	1342 90
6	500	40	1342 91
9.5	550	60	1342 92
9.5	650	60	1342 93



### 2 moveable paddles, PTFE

Stirrer shaft Ø mm	Stirrer shaft length mm	Rotor Ø mm	Cat. No
6	400	50	1342 86
6	500	50	1342 87
9.5	550	70	1342 88
9.5	650	70	1342 89



### Anchor, PTFE

Stirrer shaft Ø mm	Stirrer shaft length mm	Rotor Ø mm	Cat. No
6	500	75	1342 96
9.5	550	100	1342 97
9.5	650	140	1343 00



## Magnetic Stirring Bars, PTFE

PTFE. High magnetic strength and long life due to Alnico V magnetic cores, fully encapsulated with high-grade PTFE. Strict quality control ensures the magnetic strength, position of the magnetic core, surface quality, crack resistance, and uniform thickness of the PTFE coating. Maximum operating temperature 270 °C.

BRAND provides the right magnetic stirring bar for virtually any application. Rough vessel surfaces or abrasive sediments can quickly deteriorate the PTFE coating and thus shorten the life of stirring bars. This can be prevented by using reduced contact surface (e.g., with pivot ring) stirring bars.

### Storing conditions:

To prevent demagnetization stirring bars using Alnico V magnetic cores should not be stored in a random mass but should be kept "paired" and should not be dropped on hard or steel surfaces.



### Cylindrical

PTFE. Round, smooth surface, for universal applications. Pack of 10.

Length mm	Bar Ø mm	Cat. No.
2.5	2.5	1371 00
3.5	3.5	1371 01
5	2	1371 02
6	3	1371 03
8	3	1371 04
12	4.5	1371 05
7	2	1371 06
8	1.7	1371 07
10	3	1371 08
13	3	1371 09
15	4.5	1371 10
15	1.7	1371 11
10	6	1371 13
15	6	1371 14
20	6	1371 15
25	6	1371 20
30	6	1371 25
35	6	1371 27
40	8	1371 30
45	8	1371 32
50	8	1371 35
57*	27	1371 37
60	9	1371 40
70	9	1371 45
80	9	1371 50
108*	27	1371 55
159*	27	1371 60

\* flattened sides, pack of 1.



### Cylindrical, with pivot ring

PTFE. For vessels with slightly uneven bottoms. The pivot ring reduces the contact surface and enables the stirrer to adopt the optimum stirring position. Pack of 10.

Length mm	Bar Ø mm	Ring Ø mm	Cat. No.
8	3	4	1374 04
12	4.5	6	1374 05
15	4.5	6	1374 10
20	6	8	1374 15
25	6	7	1374 20
30	6	7.5	1374 25
35	6	8	1374 27
40	8	8.5	1374 30
45	8	10	1374 32
50	8.5	11	1374 35
60	8.5	11	1374 37
70	8.5	10	1374 45

**Cylindrical, conical**

PTFE. Round, smooth surface. Diameter increases toward the center to reduce the contact surface. Pack of 10.

Length mm	Bar Ø mm	Cat. No.
10	4	1371 68
15	5	1371 70
20	7	1371 75
25	8	1371 78
30	8	1371 80
40	8	1371 85
50	8	1371 90
60	8	1371 95
70	10	1371 97
80	10	1371 99

**Triangular**

PTFE. Wedge-shaped. Ideal for dissolving solids and mixing of sediments due to scraping action. Angular surface creates high turbulence even at low speeds. Pack of 10.

Length mm	Bar Ø mm	Cat. No.
12	6	1378 05
20	8	1378 07
25	8	1378 10
25	14	1378 12
35	10	1378 15
40	14	1378 17
50	12	1378 20
55	14	1378 22
80	14	1378 26

**Triangular, with pivot rim**

PTFE. Angular surface creates high turbulence even at low speeds. For vessels with slightly uneven bottoms. The pivot rim reduces the contact surface and enables the stirrer to adopt the optimum position. Pack of 10.

Length mm	Height mm	Cat. No.
12	6	1378 40
25	8	1378 42
35	10	1378 44
50	12	1378 46
80	18	1378 48

**Octagonal, with pivot ring**

PTFE. Angular surface creates high turbulence even at low speeds. For vessels with slightly uneven bottoms. The pivot ring reduces the contact surface and enables the stirrer to adopt the optimum position. Pack of 10.

Length mm	Bar Ø mm	Ring Ø mm	Cat. No.
13	8	10	1376 07
15	8	9.5	1376 08
25	8	9.5	1376 10
25	10	11	1376 12
38	8	9.5	1376 15
38	10	11	1376 17
51	8	9.5	1376 18
51	10	11	1376 20
64	10	11	1376 22
75	12	14.5	1376 25





## Magnetic Stirring Bars, PTFE

### Double-ended

PTFE. Excellent centering, small contact surface and high turbulence even at low speeds. Pack of 10.

Length mm	Bar Ø mm	Ends Ø mm	Cat. No.
37	8	20	1379 30
54	8	20	1379 35



### Oval

PTFE. Ideal for vessels with round bottom, e.g., round-bottom flasks. Pack of 10.

Length mm	max. Ø mm	Cat. No.
10	5	1373 00
15	6	1373 01
20	10	1373 02
25	12	1373 05
32	15	1373 07
34	15	1373 10
40	20	1373 12
50	20	1373 15
65	20	1373 20
70	20	1373 25



### Crosshead

PTFE. Steady spinning position. Excellent stirring action. Pack of 10.

Ø mm	Height mm	Cat. No.
10	5	1376 30
20	9	1376 32
25	10	1376 34
30	12	1376 36
38	15	1376 38



### Disc

PTFE. Convex shape for good centering. Particularly effective stirring action. Pack of 10.

Ø mm	Height mm	Cat. No.
9	6*	1379 26
10	6	1379 27
20	10	1379 28
30	12	1379 29

\* Also suitable for cuvettes size 10 x 10 mm.



## Magnetic Stirring Bars, PTFE

### Round, with crosshead

PTFE. Specialshape for small vessels.  
Particularly effective stirring action.  
Pack of 10.

Ø mm	Height mm	Cat. No.
10	8	1379 05
14	10	1379 10
17	13	1379 15
22	15	1379 17
30	12	1379 19



### Spherical

PTFE. Ideal for test tubes or for  
eccentric stirring motion. Pack of 1.

Ø mm	Cat. No.
12	1379 50



## Magnetic stirring bar retrievers

PP. Magnetic core fully sealed.  
Pack of 1.

Length mm	Ø mm	Cat. No.
300	10	1377 50
450	10	1377 55



## Magnetic stirring bar retrievers

PTFE. Magnetic core fully sealed.  
Pack of 1.

Length mm	Ø mm	Cat. No.
150	8	1377 00
250	8	1377 10
350	8	1377 20



## Stirring rods

AR-GLAS®. Glass tube, fused and sealed at both ends. Pack of 50.



Length mm	Ø mm	Cat. No.
200	5	1358 05
200	6	1358 10
250	6	1358 15
250	8	1358 20
300	8	1358 25

## Stirring rods

PTFE. With spatulate ends. Pack of 1.



Length mm	Bar Ø mm	Cat. No.
150	8	1362 10
200	8	1362 15
250	8	1362 20
300	8	1362 25

## Stirring rods with steel core

PTFE coated steel core. Can be bent as required; the shape is permanently retained. Round ends. Pack of 1.



Length mm	Bar Ø mm	Cat. No.
100	6	1363 05
150	6	1363 10
200	6	1363 15
250	6	1363 20
300	6	1363 25
350	6	1363 30
400	6	1363 35

## Spatulas

Impact-resistant PS. Available with double spatulate ends or a spatulate and spoon combination. Pack of 10.



Length mm	Description	Cat. No.
150	Double spatula	1398 10
180	Double spatula	1398 15
180	Spatula / spoon	1398 17
210	Spatula / spoon	1398 20

## Spatula with steel core

PE-HD coated steel core. Two differently shaped spatulate ends (approx. 16 mm wide). Pack of 5.



Length mm	Ø mm	Cat. No.
260	7	1361 00

## Spatula

PP. Two differently shaped spatulate ends (approx. 15 mm wide). Pack of 10.



Length mm	Ø mm	Cat. No.
245	6	1361 10

## Forceps

PMP. Pointed ends. Autoclavable (121 °C).  
Pack of 10.

Length mm	Cat. No.
115	1128 05
145	1128 10



## Forceps

POM, glass-fiber reinforced. Round ends.  
Pack of 5.

Length mm	Cat. No.
250	1130 20



## Forceps

PTFE. Pointed ends. Outstanding chemical  
and thermal resistance. Pack of 1.

Length mm	Cat. No.
100	1131 05
150	1131 10
200	1131 15



## Forceps

PTFE. Rectangular ends. Outstanding  
chemical and thermal resistance.  
Pack of 1.

Length mm	Cat. No.
100	1131 25
150	1131 30
200	1131 35



## Scoops

PP, white. 2 to 100 ml: Pack of 12;  
250 to 1000 ml: Pack of 6.

Capacity ml	Length mm	Cat. No.
2	60	1391 02
5	80	1391 03
10	100	1391 05
25	135	1391 10
50	160	1391 15
100	200	1391 20
250	260	1391 25
500	315	1391 30
1000	385	1391 35



## Scoops

PE, natural-colored. Pack of 6.

Capacity ml	Length mm	Cat. No.
500	350	1390 35
1000	400	1390 40





## Weighing dishes, square shape

Impact-resistant PS, antistatic. Light and flat design. Ideal for weighing. Wall thickness approx. 0.2 mm. Pack of 500.

Capacity ml	Length mm	Width mm	Height mm	Cat. No.
7	45	45	7	1555 40
100	84	84	24	1555 42
250	140	140	21	1555 44



## Weighing dishes, diamond shape

Impact-resistant PS, antistatic. Light and flat design. Ideal for weighing. Wall thickness approx. 0.2 mm. Pack of 500.

Capacity ml	Length mm	Width mm	Height mm	Cat. No.
25	70	45	12	1555 46
30	80	56	14	1555 48
100	120	90	17	1555 50



## Jars with screw cap

PE-LD. Thick-walled, slightly conical. Screw cap with sealing cone. Pack of 10.

Capacity ml	max. Ø mm	Height mm	Cat. No.
5	23	34	619 50
10	23	52	619 55
30	37	53	619 60
60	37	92	619 65
90	57	62	619 70
180	57	108	619 75



## Sample jars with screw cap

PFA. For sampling, transport and storage. PFA screw cap with integrated seal lip. Autoclavable, easy to clean, withstands temperatures from -200 °C to +260 °C. Pack of 1.

Capacity ml	Height mm	Ø mm	Thread	Cat. No.
30	54	38	GL 40	620 05
60	90	38	GL 40	620 10
90	62	54	GL 56	620 15
180	112	54	GL 56	620 20

Thread	Cat. No.
GL 40	1292 54
GL 56	1292 56

### Replacement screw caps for PFA sample jars

PFA. Pack of 1.

## Laboratory bottles

Boro 3.3. Threaded to DIN ISO 4796. Studded base for stability and abrasion resistance. Graduated, with marking area. Screw cap and pouring ring PP. Autoclavable (121 °C). Pack of 10 (5000 ml to 20000 ml: Pack of 1).

Capacity ml	Thread	Ø mm	Height mm	Cat. No.
25*	GL 25	36	74	1225 20
50	GL 32	46	91	1225 28
100	GL 45	56	105	1225 38
250	GL 45	70	144	1225 48
500	GL 45	86	183	1225 54
1000	GL 45	101	232	1225 62
2000	GL 45	136	268	1225 64
5000	GL 45	186	338	1225 70
10000	GL 45	234	412	1225 74
20000	GL 45	300	510	1225 78

\* integrated glass ring, no additional pouring ring

Thread	Screw Cap Cat. No.	Pouring ring Cat. No.
GL 25	1226 20	-
GL 32	1226 28	1226 62
GL 45	1226 38	1226 64

### Spare parts for laboratory bottles

PP. Pack of 10.

## Threaded bottles

Soda-lime glass (amber). Screw cap PP, pouring ring PE-LD. Space-saving square base. The bottles are available ethylene-acrylate coated or uncoated. Pack of 1.

Capacity ml	Width mm	Height mm	Thread	coated Cat. No.	uncoated Cat. No.
100	50	125	GL 32	7040 02	7040 12
250	65	160	GL 32	7040 04	7040 14
500	80	195	GL 32	7040 06	7040 16
1000	95	230	GL 45	7040 08	7040 18
2500*	140	300	GL 45	7040 10	7040 20

\* cylindrical shape

## Conical-shoulder bottles, narrow-mouth

PP. Standard ground joint and interchangeable stoppers (PP, square). 5000 ml size with additional carrying handle. 10000 ml size with two carrying handles.

Capacity ml	Neck size	Ø mm	Height mm	Pack of	Cat. No.
100	14/23	52	106	10	1298 38
250	19/26	70	136	10	1298 48
500	24/29	76	172	10	1298 54
1000	29/32	106	209	10	1298 62
2000*	GL 32	130	240	6	1298 66
5000*	GL 45	175	325	1	1298 70
10000*	GL 63	222	394	1	1298 74

\* with screw cap





## Conical-shoulder bottles, wide-mouth

PP. Standard ground joint and interchangeable stoppers (PE, octagonal).

Capacity ml	Neck size	Ø mm	Height mm	Pack of	Cat. No.
100	29/32	52	106	10	<b>1299 38</b>
250	34/35	70	136	10	<b>1299 48</b>
500	45/40	86	172	10	<b>1299 54</b>
1000	60/46	110	209	10	<b>1299 62</b>
2000*	GL 63	130	244	6	<b>1299 66</b>

\* with screw cap



## Narrow-mouth bottles

PE-LD, flexible, translucent. Economical multipurpose bottle. With or without screw cap.

Capacity ml	Ø mm	Height mm	Thread	Pack of	with cap Cat. No.	without cap Cat. No.
10	26	50	GL 14	100	<b>1294 08</b>	<b>1290 08</b>
20	31	58	GL 14	100	<b>1294 16</b>	<b>1290 16</b>
30	34	66	GL 14	100	<b>1294 24</b>	<b>1290 24</b>
50	39	85	GL 18	100	<b>1294 28</b>	<b>1290 28</b>
100	45	106	GL 18	50	<b>1294 38</b>	<b>1290 38</b>
250	59	140	GL 25	50	<b>1294 48</b>	<b>1290 48</b>
500	75	180	GL 25	50	<b>1294 54</b>	<b>1290 54</b>
1000	94	212	GL 28	25	<b>1294 62</b>	<b>1290 62</b>
2000	117	264	GL 28	25	<b>1294 64</b>	<b>1290 64</b>

Thread	Pack of	Cat. No.
GL 14	100	<b>1292 00</b>
GL 18	50	<b>1292 02</b>
GL 25	50	<b>1292 04</b>
GL 28	25	<b>1292 06</b>

### Screw caps for narrow-mouth bottle, PE-LD



## Narrow-mouth bottles, amber

PE-LD, opaque. For storage of light-sensitive substances. With screw cap. Pack of 1.

Capacity ml	Ø mm	Height mm	Thread	Cat. No.
50	39	85	GL 18	<b>1302 28</b>
100	45	106	GL 18	<b>1302 38</b>
250	59	140	GL 25	<b>1302 48</b>
500	75	180	GL 25	<b>1302 54</b>
1000	94	212	GL 28	<b>1302 62</b>
2000	117	264	GL 28	<b>1302 64</b>

## Wide-mouth bottles

PE-LD, flexible, translucent. With or without screw cap.

Capacity ml	Ø mm	Height mm	Thread	Pack of	with cap Cat. No.	without cap Cat. No.
50	38	80	GL 32	100	<b>1296 28</b>	<b>1293 28</b>
100	48	94	GL 32	50	<b>1296 38</b>	<b>1293 38</b>
250	62	126	GL 40	50	<b>1296 48</b>	<b>1293 48</b>
500	76	155	GL 50	50	<b>1296 54</b>	<b>1293 54</b>
1000	93	208	GL 65	25	<b>1296 62</b>	<b>1293 62</b>
2000	120	246	GL 65	25	<b>1296 64</b>	<b>1293 64</b>

Thread	Pack of	Cat. No.
GL 32	25	<b>1292 08</b>
GL 40	25	<b>1292 10</b>
GL 50	25	<b>1292 12</b>
GL 65	25	<b>1292 14</b>

### Screw caps for wide-mouth bottle, PE-LD



## Wide-mouth square bottles

PE-HD, translucent. Screw cap with sealing cone, PP, blue, with cadmium-free pigments. Tamper-proof closure with pull-off retaining ring. Space-saving square base. Pack of 1.

Capacity ml	Length mm	Width mm	Height mm	Thread	Cat. No.
100	45	45	101	GL 32	<b>1304 12</b>
250	60	60	127	GL 45	<b>1304 14</b>
500	75	75	161	GL 54	<b>1304 18</b>
1000	85	85	210	GL 54	<b>1304 22</b>
1500	111	111	209	GL 80	<b>1304 24</b>
2500	122	122	258	GL 80	<b>1304 26</b>
4000	142	142	294	GL 80	<b>1304 28</b>

Thread	Cat. No.
GL 32	<b>1303 20</b>
GL 45	<b>1303 22</b>
GL 54	<b>1303 24</b>
GL 80	<b>1303 26</b>

### Replacement screw caps for wide-mouth bottles

PP. Pack of 1.



## Wide-mouth bottles

PTFE. Outstanding chemical and thermal resistance. Sturdy, strong-walled design. With screw cap. Pack of 1.

Capacity ml	Ø mm	Height mm	Neck inner-Ø mm	Cat. No.
5	22	35	10	<b>1305 05</b>
10	26	50	12	<b>1305 08</b>
25	33	61	19	<b>1305 20</b>
50	43	76	25	<b>1305 28</b>
100	52	88	35	<b>1305 38</b>
150	60	90	35	<b>1305 44</b>
250	67	120	42	<b>1305 48</b>
500	80	150	52	<b>1305 54</b>
1000	100	185	57	<b>1305 62</b>
2000	120	240	60	<b>1305 64</b>





## Wide-mouth bottles

PFA. High-quality bottles, specially designed for long-term storage of solvents and standards (trace analysis). PFA screw cap with integrated seal lip and buttress thread. Autoclavable, easy to clean, temperature resistant from -200 °C to +260 °C. Pack of 1.

Capacity ml	Ø mm	Height mm	Thread	Cat. No.
250	61	150	S 40	1287 48
500	76	179	S 40	1287 54
1000	96	217	S 40	1287 62
2000	130	245	S 40	1287 64

Thread	Cat. No.
S 40	1292 62

### Replacement screw cap for wide-mouth PFA bottles

PFA. Pack of 1.



## Narrow-mouth bottles

PFA. High-quality bottles, specially designed for long-term storage of solvents and standards (trace analysis). PFA screw cap with integrated seal lip and buttress thread. Autoclavable, easy to clean, temperature resistant from -200 °C to +260 °C. Pack of 1.

Capacity ml	Ø mm	Height mm	Thread	Cat. No.
50	37	86	S 28	1289 28
100	45	120	S 28	1289 38
250	61	160	S 28	1289 48
500	76	190	S 28	1289 54
1000	96	240	S 28	1289 62

Thread	Cat. No.
S 28	1292 60

### Replacement screw cap for narrow-mouth PFA bottles

PFA. Pack of 1.



## Narrow-mouth bottles

Technical quality PFA, ETFE screw caps. These bottles include components made of reprocessed PFA material from our production process. Physical properties and chemical resistance equivalent to highly-pure PFA. Pack of 1.

Capacity ml	Ø mm	Height mm	Thread	Cat. No.
50	37	90	GL 18	1304 80
100	45	114	GL 18	1304 82
250	61	157	GL 25	1304 84
500	76	189	GL 25	1304 86
1000	96	233	GL 32	1304 88

Thread	Cat. No.
GL 18	1292 70
GL 25	1292 72
GL 32	1292 74

### Replacement screw caps for narrow-mouth bottles, technical quality PFA

ETFE. Pack of 1.





## Wash bottles

### without venting valve

PE-LD, flexible. Wide-mouth. Capacity 250 ml and 500 ml. High-quality wash bottles with integrated wash stream and sealing cone closure. Large opening for convenient filling. Label with designation of contents and general safety statements in English (with CAS numbers and NFPA codes) and German (with CAS numbers). Pack of 5.

### With venting valve (metal ball)

for distilled water and organic solvents only; to avoid dripping caused by overpressure

Name of solvent	Color stopper	without venting valve		with venting valve	
		250 ml Cat. No.	500 ml Cat. No.	250 ml Cat. No.	500 ml Cat. No.
Dist. water	white	1440 78	1440 84	1440 18	1440 24
Acetone	red	1440 79	1440 85	1440 19	1440 25
Methanol	green	1440 80	1440 86	1440 20	1440 26
Isopropanol	blue	1440 81	1440 87	1440 21	1440 27
Ethanol	orange	1440 82	1440 88	1440 22	1440 28
- none -	yellow	1440 83	1440 89	-	-

## Wash bottles

### with interchangeable wash head

PE-LD, flexible. Detachable threaded wash head. Adjustable height delivery tube.

Pack of 50 (1000 ml: Pack of 25).

Capacity ml	Ø mm	Total height mm	Thread	Cat. No.
100	45	196	GL 18	1441 38
250	59	240	GL 25	1441 48
500	75	279	GL 25	1441 54
1000	94	322	GL 28	1441 62

### Wash heads

Thread	Pack of	Cat. No.
GL 18	50	1292 20
GL 25	50	1292 22
GL 28	25	1292 24



## Narrow-mouth wash bottles

Technical quality PFA, ETFE screw caps, FEP wash elements. These bottles include components made of reprocessed PFA material from our production process. The tip opening can be enlarged by cutting. High temperature and chemical resistance.

Pack of 1.

Capacity ml	Ø mm	Height mm	Thread	Cat. No.
250	61	157	GL 25	1438 48
500	76	189	GL 25	1438 54
1000	96	233	GL 32	1438 62



Thread	Cat. No.
GL 25 - with FEP delivery tube	1292 73
GL 32 - with FEP delivery tube	1292 75

### Replacement Wash Heads

ETFE. Pack of 1.



## Dropping bottles with pipette

Soda-lime glass. The interchangeable ground joint stopper has an integrated dropping pipette with rubber cap. Pack of 1.

Capacity ml	Ø mm	Total height mm	Description	Cat. No.
50	45	130	Clear glass	<b>1246 33</b>
100	55	150	Clear glass	<b>1246 39</b>
50	45	130	Amber glass	<b>1245 29</b>
100	55	150	Amber glass	<b>1245 39</b>

### Rubber caps

Natural rubber (NR). Fitting all sizes. Pack of 100.

Cat. No.	<b>1247 00</b>
----------	----------------



## Dropping bottles

PE-LD, flexible. Detachable threaded cap with dropper nozzle and attached spout cap.

Capacity ml	Ø mm	Total height mm	Thread	Pack of	Cat. No.
20	31	88	GL 14	100	<b>1252 16</b>
30	34	96	GL 14	100	<b>1252 24</b>
50	39	115	GL 18	100	<b>1252 28</b>
100	45	136	GL 18	50	<b>1252 38</b>
250	59	170	GL 25	50	<b>1252 48</b>
500	75	209	GL 25	50	<b>1252 54</b>
1000	94	240	GL 28	25	<b>1252 62</b>

### Caps with dropper nozzle, PE-LD

Thread	Pack of	Cat. No.
GL 14	100	<b>1292 30</b>
GL 18	50	<b>1292 32</b>
GL 25	50	<b>1292 34</b>
GL 28	25	<b>1292 36</b>



## Dropping bottles

PTFE. Outstanding chemical resistance. Dropper nozzle with screw cap. Pack of 1.

Capacity ml	Ø mm	Height mm	Cat. No.
25	33	93	<b>1253 16</b>
50	43	100	<b>1253 28</b>

## Atomizers

PE-HD. By turning the nozzle, delivery can be varied from a fine spray to a solid stream. Pack of 5.

Capacity ml	Cat. No.
400	1441 80
850	1441 90



## Aspirator bottles, with stopcock

PE-HD. With screw cap and plastic carrying handle. With PP stopcock, 3/4" connection. Pack of 1.

Capacity l	Ø mm	Height mm	Neck inner-Ø mm	Cat. No.
5	165	335	45	1311 70
10	210	420	54	1311 74



### Spare stopcock

Fits all sizes. With PP adapter and 2 FKM seals. Pack of 1

Cat. No.	1311 00
----------	---------

## Storage bottles

### Narrow mouth

PE-HD. Narrow mouth. With screw cap and carrying handle. Pack of 1.

Capacity l	Ø mm	Height mm	Neck inner-Ø mm	Cat. No.
5	165	335	45	1308 70
10	210	420	54	1308 74





## Storage bottles

### Wide mouth

PE-HD. With screw cap and carrying handle. Pack of 1.

Capacity l	Ø mm	Height mm	Neck inner-Ø mm	Cat. No.
5	165	320	85	<b>1309 70</b>
10	210	395	120	<b>1309 74</b>



## Jerry cans

PE-HD. With screw cap and threaded pourer. Pack of 1.

Capacity l	Length mm	Width mm	Height mm	Cat. No.
5	260	130	260	<b>1316 60</b>
10	260	140	415	<b>1316 62</b>
20	330	165	470	<b>1316 64</b>



## Buckets

PE-HD. With or without push-on lid. With graduation and handle. Without spout. Pack of 1.

(Please order push-on lid separately!)

Capacity l	Height mm	Cat. No.
5	240	<b>717 72</b>
10	300	<b>717 74</b>

### Push-on lids for buckets PE-LD

PE-LD. Pack of 1.

For bucket l	Cat. No.
5	<b>717 71</b>
10	<b>717 76</b>



## Buckets

PP. With spout, reinforced rim and handle. Pack of 1.

Capacity l	Height mm	Cat. No.
12	300	<b>723 76</b>
15	340	<b>723 78</b>

## Trays (photographic trays)

PP, white. Ribbed bottom improves stability, reinforced rim, slightly sloping walls. Stackable. Pack of 1.

Length mm	Width mm	Height mm	Cat. No.
225	180	45	1566 40
300	240	70	1566 42
370	310	75	1566 44
510	410	120	1566 46
625	530	140	1566 48
840	645	160	1566 50



## Tidy tray

PVC. Designed for use as utility trays or drawer organizers. Ideal for storing magnetic stirring bars, etc. Pack of 1.

Compartments	Length mm	Width mm	Height mm	Cat. No.
5	402	302	60	7685 05
12	402	302	60	7685 10



## Ice bucket

Durable, rigid polyurethane foam. For bench-top cold storage. Excellent insulating properties. Sturdy, octagonal design for improved stability. Tapered side with molded handles and flat lid for easy handling and storage. Suitable for chemical disinfection. Operating temperature -196 °C to +95 °C. Pack of 1.

Capacity l	Length mm	Width mm	Height mm	Cat. No.
4.5	330	280	180	1561 00





## Pipette rinsing systems

Trouble-free and gentle cleaning of pipettes with repetitive siphon rinsing. Water supply connection via hose nozzle, outer-Ø 12 mm. The complete cleaning system consists of a rinsing apparatus, soaking jar and pipette basket. Please order each component separately.

### Rinsing apparatus

PE-HD. Adjust the water flow to approx. 2 l/min. Pack of 1.

for pipette length mm	Capacity l	inner-Ø mm	Base Ø mm	Height mm	Cat. No.
460	13	150	315	740	291 20
600	17	150	315	1000	291 25

### Soaking jars

PE-HD. Pack of 1.

for pipette length mm	Capacity l	inner-Ø mm	Base Ø mm	Height mm	Cat. No.
460	10	150	240	510	292 10
600	12.5	150	240	660	292 15

### Pipette baskets

PE-HD. Pack of 1.

for pipette length mm	Basket height incl. handle mm	Base Ø mm	Basket height mm	Cat. No.
360	495	145	280	290 05
460	645	145	280	290 10
600	870	145	280	290 15

## Pipette jar

### with lid

PP, lid PE-HD. The jar is suitable for dust-proof storage of pipettes up to 400 mm long. Pack of 1.

Base Ø mm	Height mm	inner-Ø mm	Cat. No.
130	430	83	288 00

## Draining rack

PS. Integrated wide draining trough. Pegs can be inserted as required. Peg holes are closed at the back – preventing leakage toward the wall. Suitable for glass graduated cylinders of up to 250 ml and beakers up to 1000 ml. Supplied complete with drain tubing and accessories for wall mounting. Width 450 mm, height 630 mm, 72 pegs (Ø 16 mm, length 120 mm). Pack of 1.

Cat. No. 951 05



## Special pegs

for draining rack

PS. Special pegs for narrow-mouthed or small vessels, e.g., test tubes, small volumetric flasks and graduated cylinders. Outer diameter 6 mm, length 120 mm. Pack of 11.

Cat. No. 951 11



## Pipette stand

PP. Holds up to 94 pipettes of different sizes. Rotary model, with additional rotary tip rest to protect the pipette tips. Suitable for all graduated and one-mark pipettes. Slightly-curved stand base rim helps retain dripping liquids. Diameter 230 mm, height 450 mm. Pack of 1.



Cat. No. 309 00

## Pipette tray

PVC. Practical tray for pipettes of any size. Length 280 mm, width 220 mm, height 29 mm. Pack of 1.

Cat. No. 283 00



## Pipette tray

PVC. Drawer organizer. Four compartments for approx. 30 graduated pipettes (1 - 20 ml). Length 420 mm, width 300 mm, height 30 mm. Pack of 1.

Cat. No. 283 05



## Pipette tray

PVC. Nine oblong dividers, open on one side. For small-volume pipettes. Length 355 mm, width 300 mm, height 45 mm. Pack of 1.

Cat. No. 7685 15





MonoDest 3000 E



MonoDest 3000 N

## Water Stills

### MonoDest 3000 E and 3000 N

- Simple operation and easy to clean (without dismantling the apparatus)
- Compact design
- Stainless steel heaters
- Separate circuits for feed and cooling water
- Low water consumption
- Thermostatically controlled heating cut-off switch provides a high level of safety if the water supply is interrupted

### MonoDest: items supplied

Basic unit including power cable, PVC tubing (7 m, inner diameter 10 mm), pinchcock for sump drain; operating manual. Pack of 1.

### MonoDest 3000 E

Ideal for applications requiring small quantities of pure water. Particularly high water quality level (conductivity 0.7  $\mu\text{S}/\text{cm}$ ) is obtained by the special design of the condenser.

Cat. No.	562 20
----------	--------

### MonoDest 3000 N

The low-cost alternative to the MonoDest 3000 E. Recommended for applications where conductivity of 1.5  $\mu\text{S}/\text{cm}$  is sufficient.

Cat. No.	562 15
----------	--------

### Accessories and spare parts for MonoDest 3000 E and N. Pack of 1.

Description	Cat. No.
Glass part, Boro 3.3, for MonoDest 3000 N	563 30
Glass part, Boro 3.3, for MonoDest 3000 E	563 60
Base for MonoDest 3000 E and N	563 65

### Technical data

		MonoDest 3000 E	MonoDest 3000 N
Power consumption	W	3000	3000
Rated current	A	14	14
Voltage	V/Hz	220-240/50-60	220-240/50-60
Tap water connection:			
Minimum pressure	bar	2	2
Distillate output			
with tap water	l/h	4.2	4.2
with deionized water	l/h	4.0	4.0
Conductivity of distillate referenced to 25 °C	$\mu\text{S}/\text{cm}$	0.7	1.5
Distillate temperature	°C	96	96
Cooling water consumption			
with tap water	l/h	45	45
with deionized water	l/h	55	55
Cooling water temperature:			
Inlet	°C	16	16
Outlet			
with tap water	°C	64	64
with deionized water	°C	48	48
Heater	Material	Stainless steel 1.4529	Stainless steel 1.4529
Glass parts	Material	Boro 3.3	Boro 3.3
Height	mm	750	600
Space required (without distillate bottle)	mm	220 x 220	220 x 220
Weight	kg	6	6



# Cleaning

## Manual Detergents for Cleaning and Disinfection

### Gentle to materials

The special formulation of active ingredients achieves optimum cleaning results even at low temperatures, brief soaking times and low alkalinity. Glass surfaces and graduations will last longer.

### Safe on tests

Detergents and disinfecting detergents can be removed without residue. Thus, even sensitive tests in hematology, serology, microbiology and enzymatic analytical chemistry are not affected. Simply observe the recommended concentrations and rinse thoroughly with water.



#### Abbreviations:

Association for Applied Hygiene (VAH)  
 Robert Koch-Institute (RKI)  
 German Society for Hygiene and Microbiology (DGHM)  
 German Veterinary Medical Society (DVG)

### Environmentally friendly

All BRAND detergents and disinfecting detergents conform to current legislation and regulations. They are free from formaldehyde, and contain biodegradable surfactants and other ingredients that are not harmful to the environment. Phosphate content is considerably reduced.

### User-friendly

Our cleaners and disinfecting cleaners have a very broad spectrum of activity. Therefore, only a small number of products are needed for a great variety of procedures. These cleaners and disinfecting cleaners do not contain caustic alkali. This is why they are particularly gentle to material, and are fully effective even in hard water.

### Cost efficient

Normally soiled instruments will become clean when using the recommended concentration of detergent. For heavy soiling, it is recommended to heat the solution within the indicated limits. However, an excessively high concentration will not increase the cleaning performance. Please note the technical information on page 342-343.



General cleaning basics can be found on page 342-343.



## Mucasol®

### Universal detergent

Liquid, alkaline high-performance concentrate for immersion and ultrasonic baths. Universal cleaner for laboratory equipment and instruments made of glass, porcelain, plastic, rubber and metal. Items are cleaned in ~ 10 - 30 minutes, without mechanical help. Mucasol® replaces chromosulfuric acid, is free from chlorine and caustic alkalis, is non-toxic, non-aggressive and biodegradable. Prolonged exposure of zinc and non-anodized aluminium surfaces should be avoided.

### Ingredients:

> 30% phosphates,  
< 5% anionic surfactants, amphoteric surfactants, complexing agents, corrosion inhibitors, auxiliary agents

### Concentration for use:

Ultrasonic bath:  
0.2 - 2% (1.4 - 14 ml/l)  
Immersion bath:  
0.7 - 3% (5 - 22 ml/l)

### Chemical and physical specifications:

Light green, clear liquid  
Density: approx. 1.4 g/ml  
pH value (0.7%): approx. 11.5  
pH value (3%): approx. 11.7

Description	Pack of	Cat. No.
2 liter bottle (2.8 kg)	6	440 03
5 liter can (7 kg)	1	440 05



## EDISONITE® CLASSIC

### Universal detergent

Alkaline detergent. Powder compound for immersion and ultrasonic bath. Ideal for removal of natural fats and oils, proteins and blood. Durable protection against corrosion damage.

### Ingredients:

> 30% phosphates,  
< 5% anionic surfactants, non-ionic surfactants, corrosion inhibitors, auxiliary agents

### Concentration for use:

0.5 - 1% (5 - 10 g/l)

### Chemical and physical specifications:

Light green powder  
Bulk density: approx. 850 kg/m<sup>3</sup>  
pH value (0.5%): approx. 11.5  
pH value (1%): approx. 11.5  
Use on zinc and non-anodized aluminium is restricted.

Description	Pack of	Cat. No.
1 kg jar	6	443 01
5 kg bucket	1	442 05



## EDISONITE® SUPER

### Universal detergent

Neutral detergent. Powder compound for immersion and ultrasonic bath. Ideal for removal of natural fats and oils, proteins and blood. EDISONITE® SUPER is recommended for optical glass, for plastics sensitive to alkalis and rubbers.

### Ingredients:

> 30% phosphates,  
5 - 15% anionic surfactants,  
corrosion inhibitors, auxiliary agents

### Concentration for use:

0.5 - 1% (5 - 10 g/l)

### Chemical and physical specifications:

Light green powder  
Bulk density: approx. 800 kg/m<sup>3</sup>  
pH value (0.5%ig): approx. 7.5  
pH value (1%ig): approx. 7.5

Description	Pack of	Cat. No.
1 kg jar	6	443 61
5 kg bucket	1	443 65

## Mucocit®-T

### Instrument disinfecting detergent

Particularly suited for sensitive instruments. Free of phosphates, aldehydes, phenols and chlorine derivatives. Fresh scent. CE-marked according to MPG (German Medical Products Law).

#### Ingredients:

100 g Mucocit®-T contain:  
3.9 g didecyldimethylammoniumchloride,  
4.5 g alkylpropylenediamino-  
1,5-bisguanidiniumacetate,  
2 g bis(-aminopropyl)-laurylamine,  
2.8 g laurylpropylenediamine,  
5 - 15% non-ionic surfactants,  
auxiliary agents

#### Chemical and physical specifications:

Clear, blue liquid, fresh smell  
Density: approx. 1 g/ml  
pH value (1%, 20 °C): approx. 10.5

### Microbiological efficiency/ concentration for use:

Disinfection of instruments: Bacteria (incl. Tuberculosis and mycobacteria) and fungi with high organic burden according to DGHM/VAH directives:

1% (10 ml/l)/1 hour

2% (20 ml/l)/30 minutes

3% (30 ml/l)/15 minutes

Limited virucidal efficacy\* (incl. HIV, HBV, HCV): 1% (10 ml/l)/5 minutes

Inactivation of rotaviruses:

2% (20 ml/l)/5 minutes

Description	Pack of	Cat. No.
2 liter bottle	6	448 22
5 liter can	3	448 25



\* As recommended by the RKI, Bundesgesundheitsblatt 01/2004

## Mucocit®-P

### Instrument disinfecting detergent

Powerful and gentle to labware. Free of phosphates, aldehydes and phenols. Fresh scent.

#### Ingredients:

100 g Mucocit®-P contain:  
5 g bis(-aminopropyl)-laurylamine,  
5 g didecyl-dimethyl-ammonium chloride,  
5 - 15% NTA, < 5% non-ionic surfactants,  
phosphonates, auxiliary agents

#### Chemical and physical specifications:

Light-blue powder, fresh smell  
Bulk density: approx. 620 kg/m<sup>3</sup>  
pH value (4%): approx. 11

### Microbiological efficiency/ concentration for use:

Disinfection of instruments: Bacteria and fungi with high organic burden acc. to DGHM/VAH directives: 3% (30 g/l)/1 hour  
Tuberculosis bacteria: 3% (30 g/l)/1 Std.

Limited virucidal efficacy\* (incl. HIV, HBV, HCV): 1% (10 g/l)/5 minutes

Inactivation of human rotaviruses:

1% (10 g/l) / 5 minutes

Description	Pack of	Cat. No.
2.5 kg bucket	3	449 20



\* As recommended by the RKI, Bundesgesundheitsblatt 01/2004

## Pursept®-AF disinfection concentrate

### Surface disinfecting detergents

Cleaning and disinfection of floors, walls and fittings in one operation. Appropriate for use in the foods sector. CE-marked according to MPG (German Medical Products Law).

#### Ingredients:

100 g Pursept®-AF contain:  
12.5 g didecyl-dimethyl-ammoniumchloride,  
1.5 g bis(aminopropyl)-laurylamine,  
< 5% NTA, < 5% non-ionic surfactants,  
auxiliary agents, scents

#### Chemical and physical specifications:

Clear, green liquid, Density approx.: 1 g/ml  
pH value (1%, 20 °C): approx. 10

### Microbiological efficiency/ concentration for use:

Surface disinfection: Bacteria and fungi with high organic burden according to DGHM/VAH directives: 0.25% (2.5 ml/l)/4 hours  
0.5% (5 ml/l)/1 hour

1% (10 ml/l)/30 minutes

2% (20 ml/l)/15 minutes

Limited virucidal efficacy\* (incl. HIV, HBV, HCV): 1% (10 ml/l)/15 minutes

Inactivation of rotaviruses:

0.25% (2.5 ml/l)/2 minutes

Effectiveness against TbB:

2% (20 ml/l)/1 hour

Description	Pack of	Cat. No.
2 liter bottle	6	448 50
5 liter can	3	448 55



\* As recommended by the RKI, Bundesgesundheitsblatt 01/2004

- DGHM/VAH-tested
- RKI-compliant
- Aerosol-free disinfectant wipes
- Fresh scent



- Free of aldehydes
- Effective in only 15 seconds
- DGHM/VAH tested and RKI-compliant, with aerosol-free application (disinfectant wipes)
- Fresh scent



- Free of aldehydes
- Effective in only 15 seconds
- DGHM/VAH-tested and RKI-compliant
- Fresh scent



## Pursept®-A Xpress

Fast acting ready-to-use

### Surface disinfecting detergents

Refillable pump-atomizer without propellant.

#### Ingredients:

100 g Pursept®-A Xpress contain:  
55 g ethanol,  
0.03 g n-alkyl-aminopropyl-glycine,  
auxiliary agents

#### Chemical and physical specifications:

Clear, colorless liquid  
Density: approx. 0.9 g/ml  
pH value: approx. 7.5

#### Microbiological efficiency of the undiluted working solution:

Surface disinfection: Bacteria and fungi with little organic burden with mechanics acc. to DGHM/VAH directives: 15 seconds  
Limited virucidal efficacy\*  
(incl. HIV, HBV, HCV): 15 seconds  
Effectiveness against TbB: 30 seconds

\* As recommended by the RKI, Bundesgesundheitsblatt 01/2004

Description	Pack of	Cat. No.
1 liter bottle	10**	448 30
5 liter can	3	448 35
Atomizer head	1	448 32

\*\* 10 bottles + 1 atomizer head

## Pursept®-A Xpress disinfection tissues

### Surface disinfecting detergents

Simply wipe the surfaces with the tissue and leave to soak.

#### Ingredients:

1 Pursept®-A Xpress tissue contains approx.: 1027 mg ethanol,  
0.56 mg n-alkyl-aminopropyl-glycine,  
auxiliary agents

#### Chemical and physical specifications:

Active solution (Pursept®-A Xpress):  
Clear, colorless liquid, fresh smell  
Density: approx. 0.9 g/ml  
pH value: approx. 7.5  
Tissues: FCC-bleached (oxidation bleach), bio-degradable

#### Microbiological efficiency of the undiluted working solution:

Surface disinfection: Bacteria and fungi with little organic burden with mechanics acc. to DGHM/VAH: 15 seconds  
Limited virucidal efficacy\*  
(incl. HIV, HBV, HCV): 15 seconds  
Effectiveness against TbB: 30 seconds

\* As recommended by the RKI, Bundesgesundheitsblatt 01/2004

Description	Pack of	Cat. No.
Dispenser box (150 tissues*)	6	448 40
Refill unit (150 tissues*)	6	448 45

\* 135 x 222 mm

**Pursept® Wipes XL and Pursept®-A Xpress**, to disinfect the workplace, lab table or clean bench quickly and reliably. Wipes can be stored in the refillable dispenser box.

## Pursept® Wipes XL

Wipes are made of 100% polyester, specially designed to be tear-proof and lint-free. They offer optimal disinfectant delivery together with excellent contaminant uptake.

Description	Pack of	Cat. No.
70 wipes (230 x 280 mm) per roll	6	448 70

## Dispenser Box for Pursept® Wipes XL, empty

Refillable dispenser box for practical and space-saving storage of Pursept® Wipes XL, a perfect way to keep pre-soaked wipes from drying out.

Description	Pack of	Cat. No.
Dispenser box for 70 wipes (230 x 280 mm)	3	448 75