

Baths

Bath, Basic-type, 100°C 2
 , Basic-type, 250°C 3
 , Extraction Water Bath 4
 , Shaking Water Bath 5
 , Viscosity 6



Basic-type Bath
Digital General Purpose Water Bath
"WB" 6 / 11 / 22L, 100 °C



Basic-type Bath
Digital High-Temperature Oil Bath
"WHB" 6 / 11 / 22L, 250 °C



Extraction Water Bath
Multi-purpose Extraction Water Bath
"WEB" 4- / 6- / 8-Place, 100 °C



Shaking Water Bath
Digital Precise Shaking Water Bath
"MaXturdy"™ 18 / 30 / 45L, 100 °C



Viscosity Bath
Digital Precise Viscosity Bath
"WVB" 100 °C

DAIHAN-brand® Digital General Purpose Water Bath “WB”, 6-/11-/22- Lit, up to 100°C, ±0.1°C, CE-Certi. with Digital Fuzzy Control System, 1×Stainless-steel Flat Lid, and Back Light LCD, with Certi. & Traceability



Digital Precise Water Bath, 11Lit. “WB-11”

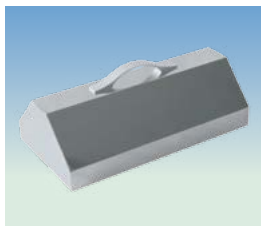
- Made in Korea ■ CE Certified
- with Certificate & Traceability : Controlled by Serial Number, Certificate, Delivery-information, and Traceable Data Base System
- Digital Fuzzy Control System Implementing Superior Temperature Accuracy
- Patented Jog-Shuttle Control System and Digital LCD with Back-Light Function
- * User's Self-Compensation Function to Control Difference between Real Temperature and Indicated Temperature (±10.0°C).
- * 304 Stainless steel Bath & Lid for Superior Durability & High Thermal Efficiency/Constant.
- * Digital Timer Function(99hr 59min) : ‘Delay Time’ and ‘Operation Time’ can be Controlled.
- * Storage Function for the Set Values of Temperature and Timer.
- * Locking Mode Supported for Experimental Safety (Input to Jog-Shuttle can be Disabled).

Specifications & Ordering information

Spec.	Model	“WB-6”	“WB-11”	“WB-22”
Capacity		6 Lit.	11 Lit.	22 Lit.
Temp. Range & Accuracy		Room Temp.+5°C~ 100°C, ±0.1°C		
Temp. Resolution		0.1°C-Display, 0.1°C-Control		
Temp. Uniformity & Probe		±1.0°C, PT100		
Heating Power		800 W	1 kW	2 kW
Timer & Alarm		99hr 59min (Delay & Continuous run), Error status & Timer-end		
Display		Digital LCD with Back-Light Function		
Controller		Digital Fuzzy Controller with Jog - Shuttle Switch (Turn + Push)		
Safety Circuit		Over-Temp. / -Current protection, Sensor Error Detection		
Material		Stainless-steel (# 304)-Internal, Powder Coated steel-External		
Lid		included Stainless-steel Flat Lid, Optional Dome Lid		
Drain Valve		None		Mounted(φ9.5~11mm)
Dimension (w×d×h)	Effective Space	300×155×h110mm	302×240×h110mm	500×295×h110mm
	Internal	300×155×h150mm	302×240×h150mm	500×295×h150mm
	External	325×180×h260mm	325×265×h260mm	535×330×h260mm
Packing Size (mm) and Gross Weight (kg)		350×210×h310mm, 8 kg	350×300×h310mm, 10 kg	570×360×h310mm, 14 kg
Electrical Reqt.s.		1 Phase, AC 120V, 60Hz or AC 230V, 50 / 60Hz		
Cat. No.	230V	DH.WB00106	DH.WB00111	DH.WB00122



(1) Flat Lid, Stainless-steel (Included)



(2) Dome Lid, Stainless-steel



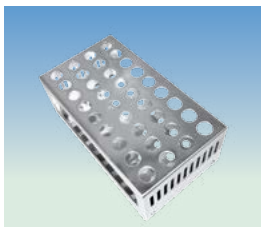
(3) “BFC106” Lid with Concentric Ring Cover Sets for 6Lit.



(4) “BFC111” Lid with Concentric Ring Cover Sets for 11Lit.



(5) “BFC122” Lid with Concentric Ring Cover Sets for 22Lit. Bath



(6) Test Tube Rack, Stainless-steel

Optional Lids and Tube Rack, Stainless-steel

- DH.WB010206 (2) Dome Lid, for 6 Lit, 324×176×h100mm, “BD206”
- DH.WB010211 , for 11 Lit, 324×263×h100mm, “BD211”
- DH.WB010222 , for 22 Lit, 533×328×h100mm, “BD222”
- DH.WB030106 (3) Lid with 2× Concentric Ring Cover Sets, for 6 Lit, Stainless-steel, 330×182×h20mm, “BFC106”
- DH.WB030111 (4) Lid with 2× Concentric Ring Cover Sets, for 11 Lit, Stainless-steel, 329×269×h20mm, “BFC111”
- DH.WB030122 (5) Lid with 6× Concentric Ring Cover Sets, for 22 Lit, Stainless-steel, 539×334×h20mm, “BFC122”
- DH.WB020106 (6) Tube Rack, for 6 Lit, 36Hole×φ17mm, “BTH106”, Stainless-steel, 220×125×h78.5mm
- DH.WB020206 (6) Tube Rack, for 6 Lit, 15Hole×φ32mm, “BTH206”, Stainless-steel, 220×125×h78.5mm
- DH.WB020111 (6) Tube Rack, for 11 Lit, 63Hole×φ17mm, “BTH111”, Stainless-steel, 220×205×h78.5mm
- DH.WB020211 (6) Tube Rack, for 11 Lit, 25Hole×φ32mm, “BTH211”, Stainless-steel, 220×205×h78.5mm

DAIHAN-brand® Digital High-Temperature Oil Bath “WHB”, 6-/11-/22-Lit, with Certi. & Traceability with 1 × Stainless-steel Flat Lid, Digital Fuzzy Control System, Back Light LCD, up to 250°C, ± 1.5°C



Digital High Temperature Oil Bath, 11Lit., “WHB-11”



Included Flat Lid, Stainless-steel

- Made in Korea. ■ CE Certified.
- with Certificate & Traceability : Controlled by Serial Number, Certificate, Delivery-information, and Traceable Data Base System.
- Digital Fuzzy Control System Implementing Superior Temperature Accuracy.
- Patented Jog-Shuttle Control System and Digital LCD with Back-Light Function.
- * Rustless 304 Stainless-steel Bath having 1.2mm & Ceramic Fiber Insulator of 50mm Thickness.
- * User's Self-Compensation Function to Control Difference between Real Temp. and Indicated Temp.
- * Storage Function for the Set Values of Temperature & Timer.
- * Alarm & Digital Timer : 'Delay Time' and 'Operation Time' can be Controlled.
- * Locking Mode Supported for Experimental Safety (Input to Jog-Shuttle can be Disabled).

Specifications & Ordering information

Spec.	Model	“WHB-6”	“WHB-11”	“WHB-22”
Capacity		6 Lit.	11 Lit.	22 Lit.
Temp. Range & Accuracy		Room Temp +5°C to 250°C, ±1.5°C		
Temp. Uniformity & Probe		±3.0°C, PT100		
Heating Power		1.5 kW	2.0 kW	2.5 kW
Timer & Alarm		99hr 59min (Delay & Continuous run), Error status & Timer-end		
Display		Digital LCD with Back-Light Function		
Controller		Digital Fuzzy Controller with Jog-Shuttle Switch (Turn+Push)		
Safety Circuit		Over-Temp./-Current protection, Sensor Error Detection		
Material		Stainless-steel (#304)-Internal, Powder Coated steel-External, 50 mm Thickness Ceramic Fiber-Insulation		
Lid		Stainless-steel Flat Lid Included		
Drain Valve		Mounted		
Dimension (w×d×h)	Effective Space	270×180×h110 mm	300×250×h110 mm	400×300×h140 mm
	Mounted	270×180×h150 mm	300×250×h150 mm	400×300×h180 mm
	External	425×305×h340 mm	425×375×h340 mm	525×425×h370 mm
Packing Size (mm) & Gross Weight		470×400×h500 mm, 23 kg	600×490×h500 mm, 25 kg	600×490×h500 mm, 39 kg
Electrical Reqts.		1 Phase, AC 120V, 60Hz or 230V, 50 / 60Hz		
Cat. No.	230V	DH.WHB00106	DH.WHB00111	DH.WHB00122

Therminol D12® – 85 + 230°C Best COOL-/HEAT-ing Transfer Fluid, Synthetic Hydrocarbon Mixture for Low/High-Temp Baths, Clearly Harmless Liquid, Low Odor FDA Grade, 4/18/200Lit



(1) 4Lit

(2) 18Lit

- Supplied by “Eastman” USA ■ Clear, Water white Liquid / Non-Toxic / Low-Smell, FDA-Grade.
- The Best Circulation Properties / Thermal Stability.
- The Lowest Viscosity, cP ► (1) -50°C : 12cP, (2) 100°C : 0.46cP, (3) 200°C : 0.19cP, (4) 230°C : 0.16cP
- * Specific Gravity : 0.759 at 25°C * Autoignition Temp : 247°C * Flash Point : 62°C
- * Freezing Point : -94°C * Boiling Point(90%) : 204°C
- * Package : (1) 4Lit. and (2) 18Lit. PE Square Bottle / Subdivision, Original-200Lit. Steel Drum / 155kg

SL.CirD12.1 (1) “Therminol D12” Cool/Heat Transfer Fluid, -85 +230°C, 4 Lit.

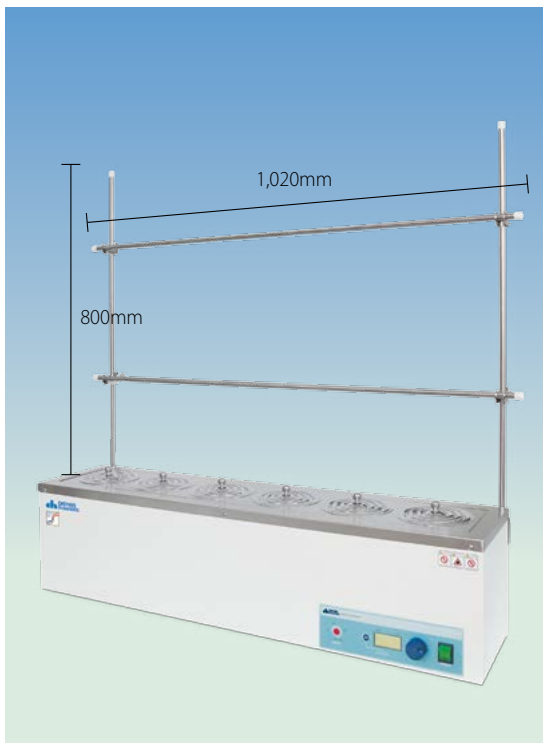
SL.CirD12.2 (2) “Therminol D12” Cool/Heat Transfer Fluid, -85 +230°C, 18Lit.

SL.CirD12 “Therminol D12” Cool/Heat Transfer Fluid, -85 +230°C, 200Lit./Drum

DAIHAN-brand® Extraction Water Bath “WEB”, Multi-purpose, 4-/6-/8-Place, with Certi. & Traceability with Concentric Ring Cover Sets & Holding Frame, Digital Fuzzy Control, Back Light LCD, up to 100 °C, ±0.2 °C



Multi-purpose Extraction Water Bath “WEB-4”



Multi-purpose Extraction Water Bath “WEB-6”

- Made in Korea ■ CE Certified
- with Certificate & Traceability : Controlled by Serial Number, Certificate, Delivery-information, and Traceable Data Base System
- Ideal for Gentle Extraction, Soxhlet Extraction and Determination of COD
- Digital Fuzzy Control System Implementing Superior Temperature Accuracy
- Concentric Ring Cover Sets make Effective Steaming Work
- Patented Jog-Shuttle Control System and Digital LCD with Back-Light Function
- * 4, 6, 8 Extraction Places are available.
- * Included Concentric Ring Cover Set & Holding Frame
- * User's Self-compensation Function to Control Difference between Real Temperature and Indicated Temperature (±10.0 °C).
- * High Quality 304 Stainless steel Bath and Holding Frame for Superior Durability.
- * Storage Function for the Set Values of Temperature and Timer.
- * Alarm Function : Error Status and Timer-end.
- * Locking Mode Supported for Experimental Safety (Input to Jog-Shuttle can be Disabled).

Specifications & Ordering information

Spec.	Model	“WEB-4”	“WEB-6”	“WEB-8”
Temp. Range & Accuracy		Room Temp. +5 °C to 100 °C, ±0.2 °C		
Temp. Uniformity & Sensor		±1.0 °C, PT100		
No. of Extraction Holes		4 Places	6 Places	8(4×2) Places
Heating Power		1.4 kW	1.8 kW	1.4 kW×2
Timer & Alarm		99hr 59min (Delay & Continuous run), Error status & Timer-end		
Display		Digital LCD with Back-Light Function		
Controller		Digital Fuzzy Controller with Jog-Shuttle Switch (Turn+Push)		
Safety Circuit		Over-Temp./-Current protection, Sensor Error Detection, Leakage Breaker		
Material		Stainless steel (#304)-Internal, Powder Coated steel-External, Stainless steel-Holding Frame		
Lid & Top Opening Dia.		Concentric Ring Cover Sets included, φ 110 mm		
Drain Valve		Mounted		
Drain Valve	Mounted	610×160×h160 mm	910×140×h160 mm	610×290×h160 mm
	External	720×245×h275 mm	975×245×h275 mm	720×375×h275 mm
Packing Size (mm) and Gross Weight (kg)		710×310×h300, 18 kg	1,030×320×h370, 25 kg	880×420×h300, 34 kg
Electrical Reqts.		1 Phase, AC 120V, 60Hz or 230V, 50 / 60Hz		
Cat. No.	230V	DH.WEB01004	DH.WEB01006	DH.WEB01008

Spare Lid with Concentric Ring Cover Set and Holding Frame Set

- DH.WEB11000 Lid with Concentric Ring Cover Sets, “EBC100”, for all “WEB” models
- DH.WEB21004 Holding Frame Set, “EBF100”, for “WEB-4”, 2ea×800mm Pole & 2ea×700mm Pole
- DH.WEB21006 Holding Frame Set, “EBF200”, for “WEB-6”, 2ea×800mm Pole & 2ea×1,020mm Pole
- DH.WEB21008 Holding Frame Set, “EBF300”, for “WEB-8”, 4ea×800mm Pole & 4ea×740mm Pole

DAIHAN-brand® Digital Precise Shaking Water Bath “MaXturdy™”, Reciprocating Motion, 18-/30-/45-Lit with Universal Spring Rack, Digital Fuzzy Control, up to 2 Lit. Flask, 20~250 rpm, up to 100°C, ±0.1°C, with Certi. & Traceability

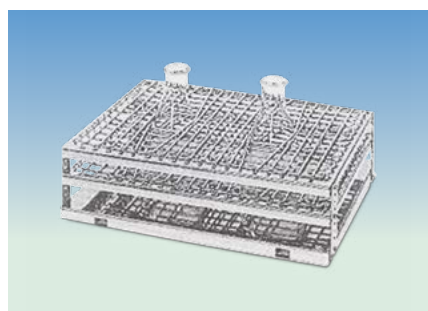


Digital Precise Shaking Water Bath
“MaXturdy™ 30”

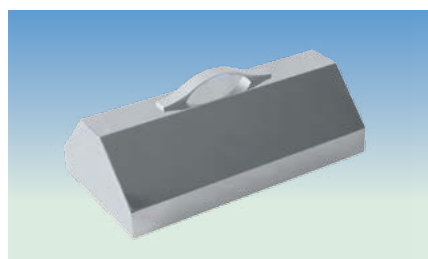
- Made in Korea ■ CE Certified
- with Certificate & Traceability : Controlled by Serial Number, Certificate, Delivery-information, and Traceable Data Base System
- Digital Fuzzy Controller Provides Precise Temperature Control
- Digital Feedback Controller Provides Precise Speed Control
- Hi-Performance Shaking Engine ensures Best Smoothly Shaking Motion and Minimum Noise and Vibration
- Easy to Disassemble Spring Rack for Cleaning
- Patented Shaking Mechanism : Minimum Noise and Vibration
- Patented Jog-Dial Control System and Digital LCD with Back-Light
- * Ideal for Direct Immersion of Samples or Shaking in the Field of Biotechnology and Laboratories.
- * Hybridization Applications, Cell Cultures, Cell Aeration, Increasing Solubility Rates, Molecular Biology Assays, Bacterial Cultures
- * Stainless-steel Bath for Superior Durability & High Thermal Efficiency
- * Universal Stainless-steel Spring Rack Included : for various kind of Flasks and Tubes (up to 2 l)
- * User's Self-Compensation Function to Control Difference between Real Temperature and Indicated Temperature (± 10.0°C)
- * Over Temp., Over Current Protection and Sensor Error Detection
- * Digital Timer Function : 'Delay Time' and 'Operation Time' : Can be Controlled

Specifications & Ordering information

Spec.	Model	“MaXturdy™ 18”	“MaXturdy™ 30”	“MaXturdy™ 45”
Capacity		18 Lit.	30 Lit.	45 Lit.
Max.Q'ty of Erlenmeyer Flask		250 ml×6 ea, 500 ml×4 ea, 1000 ml×1 ea	250 ml×10 ea, 500 ml×8 ea, 1000 ml×3 ea	250 ml×18 ea, 500 ml×15 ea, 1000 ml×8 ea
Temp. Range & Accuracy		Room Temp. +5°C to 100 °C, ±0.1°C		
Temp. Resolution		0.1°C-Display, 0.1°C-Control		
Temp. Uniformity & Probe		±0.5°C, PT100		
Heating Power		1.4 kW	1.8 kW	2.4 kW
Shaking Speed & Resolution		20 ~ 250 rpm, 1rpm-Display/1rpm-Control		
Shaking Stroke (mm)		15, 20, 30 Available (20 as factory Default)		
Timer & Alarm		99hr 59min (Delay & Continuous run), Error status & Timer-end		
Display		Digital LCD with Back-Light Function		
Controller Digital		Fuzzy Controller with Jog-Shuttle Switch (Turn+Push)		
Safety Circuit		Over-Temp./-Current protection, Sensor Error Detection		
Rack		Included Stainless steel Spring Rack : Universal-type		
Drain Valve		Mounted		
Material		Stainless steel (# 304)-Internal, Powder Coated steel-External		
Dimension (w×d×h)	Internal (mm)	300×300×h200	500×300×h200	600×380×h200
	External (mm)	563×353×h340	763×353×h340	863×433×h340
Packing Size (mm) & Gross Weight (kg)		620×420×h450, 24 kg	820×420×h450, 26 kg	920×500×h450, 32 kg
Electric Reqts.		1 Phase, AC 120V, 60 Hz or 230V, 50 / 60Hz		
Cat. No.	230V	DH.WSB03018	DH.WSB03030	DH.WSB03045



(1) Universal Spring Rack
(Included)



(2) Dome Lid, Stainless steel (Optional)

(1) Spare Universal Spring Racks

- DH.WSB55018 (1) Spring Rack, for 18 Lit, 245×270×h110mm, “SBR018”
 DH.WSB55030 , for 30 Lit, 445×270×h110mm, “SBR030”
 DH.WSB55045 , for 45 Lit, 545×350×h110mm, “SBR045”

(2) Optional Stainless-steel Dome Lids

- DH.WSB02018 (2) Dome Lid, for 18 Lit, 363×353×h69mm, “SBD018”
 DH.WSB02030 , for 30 Lit, 563×353×h69mm, “SBD030”
 DH.WSB02045 , for 45 Lit, 663×433×h69mm, “SBD045”

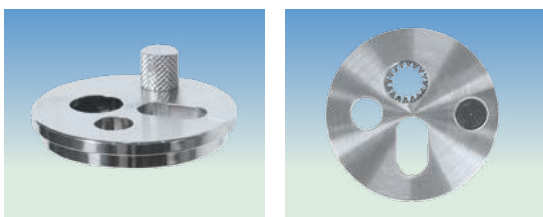
DAIHAN-brand® Digital Precise Viscosity Bath “WVB”, Useful 5 × Viscometer, up to 100°C, ±0.1°C with 5 Holes Stainless steel Lid for Viscometer Holder, Available Reverse & Routine-type Viscometer, Transparent Window, 30 Lit



Digital Precise Viscosity Bath “WVB-30”, included Flat Lid for Viscometer Holder (without Viscometer Holder)



Flat Lid with Viscometer Holder



(1) Viscometer Holder “WVB02010” (Optional)

- Made in Korea ■ CE Certified
- with Certificate & Traceability : Controlled by Serial Number, Certificate, Delivery-information, and Traceable Data Base System
- Used for Precise Measurement with Capillary Viscometers
- Digital Fuzzy Control System Implementing Superior Temperature Accuracy
- Powerful Circulation Pump ensures Highest Uniformity of Temperature
- Viscometer Holder : Available Reverse & Routine-type Viscometer
- Patented Jog-Shuttle Control System and Digital LCD with Back-Light Function.
- * Stainless-steel(#304) made inner bath
- * Stainless-steel Lid Contains Five Holes for Insertion of Viscometer Holders
- * User's Self-compensation Function to Control Difference between Real Temperature and Indicated Temperature
- * Storage Function for the Set Values of Temperature and Time
- * Locking Mode Supported for Experimental Safety (Input to Jog-Shuttle can be Disabled)
- * Included Flat Lid for Viscometer(without Viscometer Holder)
- * Over Temp., Over Current Protection and Sensor Error Detection
- * Digital Timer Function : 'Delay Time' and 'Operation Time' : Can be Controlled

Specifications & Ordering information

Spec.	Model	“WVB-30”
Range & Accuracy		Room Temp. +5°C to 100 °C, ±0.1°C
Temp. Resolution		0.1°C-Display, 0.1°C-Control
Temp. Uniformity & Probe		±0.2°C , PT100
Heating Power		2 kW
Pump		Magnetic Drive, Max. Flow 30 Lit./min
Timer & Alarm		99hr 59min (Delay & Continuous run), Error status & Timer-end
Display		Digital LCD with Back-Light Function
Controller		Digital Fuzzy Controller with Jog-Shuttle Switch (Turn+Push)
Safety Circuit		Over-Temp./-Current protection, Sensor Error Detection
Lid		Included 5 Holes Stainless-steel Lid for Viscometer Holder
Drain Valve		Mounted
Viewing Window Size(mm)		230×180
Material		Stainless-steel (# 304)-Internal, Powder Coated steel-External, Vacuum Sealed and Tempered Safety Pair Glasses-Window
Dimension (w×d×h)	Effective Space (mm)	330×300×h260 mm
	Internal (mm)	350×300×h300 mm
	External (mm)	585×375×h420 mm
Packing Size (mm) & Gross Weight (kg)		640×450×h500 mm, 24 kg
Electric Reqtts.		1 Phase, AC 120V, 60Hz or 230V, 50 / 60Hz
Cat. No.	230V	DH.WVB01030

Spare Stainless-steel Flat Lid for Viscometer Holder

DH.WVB11030 Flat Lid, for 30 Lit, w380×d330, 5×φ50mm Holes, “VBF030”

Optional Viscometer Holder

- DH.WVB02010 (1) Viscometer Holder, “WVB02010” for Ostwald, Ubbelohde
- DH.WVB02011 Viscometer Holder, “WVB02011” for Cannon-Fenske Reverse Flow, Cannon-Fenske Routine
- DH.WVB02012 Viscometer Holder, “WVB02012” for Thread-type Ubbelohde



Distributed By:
Pacific Laboratory Products



Free Call: 1800 723 405
Ph: (03) 9845 0300
Fax: +61 3 9845 0350
Email: sales@pacificlab.com.au

www.pacificlab.com.au

 /PacificLabP  @PacificLabP